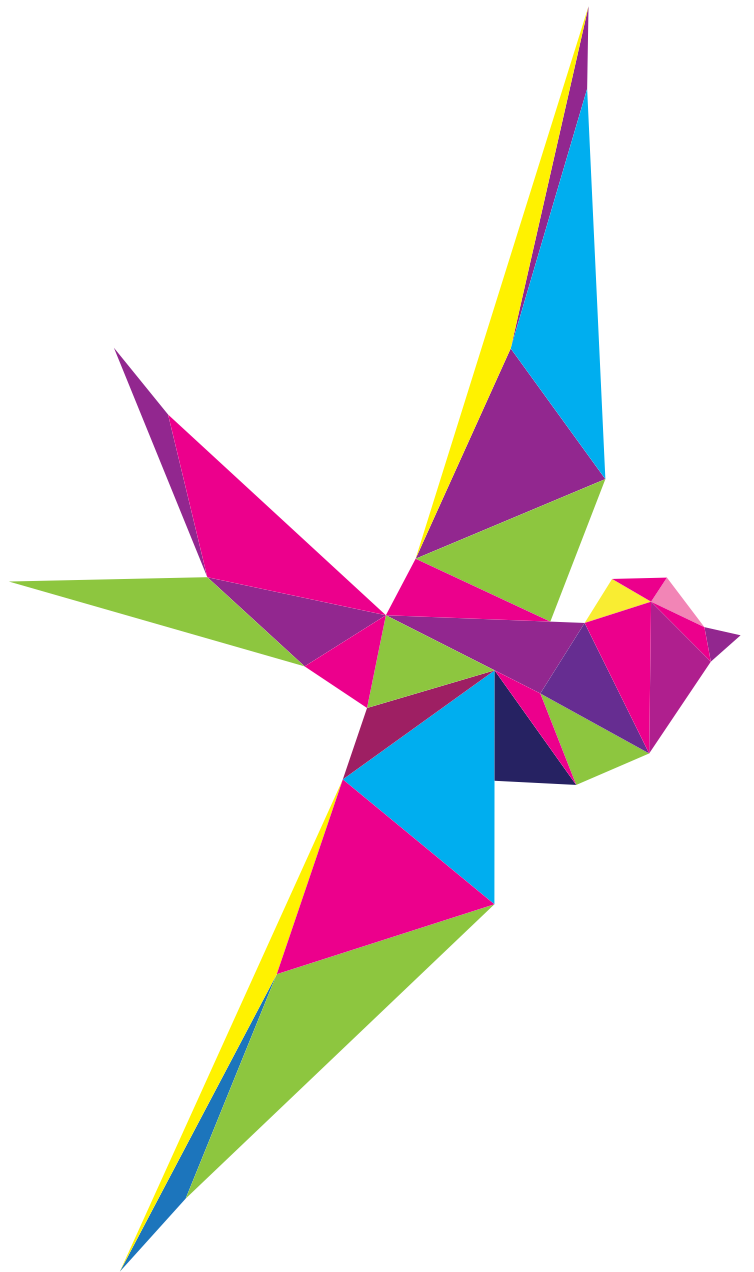


annual report 2014



PASSIONATE

CARING

COMMITTED



THIS IS FRANCIS.

YESS is a relentlessly dedicated not-for-profit organization that shapes the future of Edmonton by supporting youth facing difficult realities. YESS offers distinctive and invaluable services through a variety of channels that range from immediate emergency shelter to ongoing support programs and individual guidance.



FRANCIS HAS A
BIG
 HEART

AND A LOT OF FRIENDS.

Alta-Fab Structures Ltd.

ATCO EPIC

B&B Demolition Ltd.

Beta Sigma Phi Edmonton Area Council

Boston Pizza

Brookfield Residential (Alberta) LP

Canadian Western Bank

City & BT

Collin Bruce Mortgage Mentors

Collins Industries

Dacro Industries Inc.

Dave and Gwen Burroughs

Don Adams

Eddies Men's Wear

Edmonton Arts Council Society

Edmonton Community Foundation

Edmonton Fire Rescue Services

Edmonton International Airports

Edward Graham

Enbridge Pipelines Inc.

EPCOR

Estate of Joyce Neary

Estate of Kenneth Sinclair MacRae Welsh

Events Edmonton

Frank J. Flaman Foundation

Go Auto

Grasschopper Landscaping

Home Depot of Canada Inc.

Homeward Trust Foundation

Impark

Inland AV

Investors Group

Ja-Co Welding & Consulting Ltd.

John Brooks Company Limited

Jump Outta Bed

Keith Graham

la maison SIMONS

McCoy Corporation

Nordic Systems

Pattison

Peter Faiazza

Realtors® Community Foundation

RGG Management Ltd.

Servus Credit Union

SONIC 102.9

Stormboard

Strathcona County

TELUS Corporation

The Sherlock Holmes Hospitality Group

Trailblazer RV Centre Ltd.

York Realty Inc.

YESS is fortunate to have so many loyal supporters. Over the past year, each of the people and organizations listed here are top donors in helping us help Edmonton's youth.

BUT ONE DAY



FRANCIS FOUND SOMETHING NOT QUITE RIGHT.





A YOUNG BIRD HAD LOST ITS WAY.

BOUNCING THROUGH A MAZE OF DEAD
ENDS,

NOT YET STRONG ENOUGH TO FLY ON ITS OWN,

THIS YOUNG BIRD DIDN'T KNOW WHERE TO GO.

Every night in Edmonton, there are teens with no safe place to go. Some have addictions they can't control; others need human services to help them get back on their feet. Some just need a bed for the night.

AND FRANCIS WAS DETERMINED TO HELP.



FRANCIS WENT TO WORK HELPING
THE YOUNG BIRD FIND HIS WAY.

YESS' PROGRAMS

Nexus - a rapid referral centre to help kids who are new to the streets get back into a stable home as quickly as possible.

Mosaic - a wraparound service model where staff work closely with the youth in a one-on-one setting, helping them set, achieve, and celebrate their short-term goals.

ARC - a daytime hub where youth can access a variety of services and participate in different workshops and activities each day.

Compass - designed to help youth who have suffered trauma to build the emotional skills to cope with anxiety or stress, and to help build positive and meaningful relationships.

Shanoa's Place & Graham's Place - a homelike environment that is nurturing, supportive, and safe to help youth with addictions, mental health, and past trauma, while building healthy relationships.

HE DID EVERYTHING HE COULD TO KEEP THE YOUNG
BIRD GOING IN THE RIGHT DIRECTION.

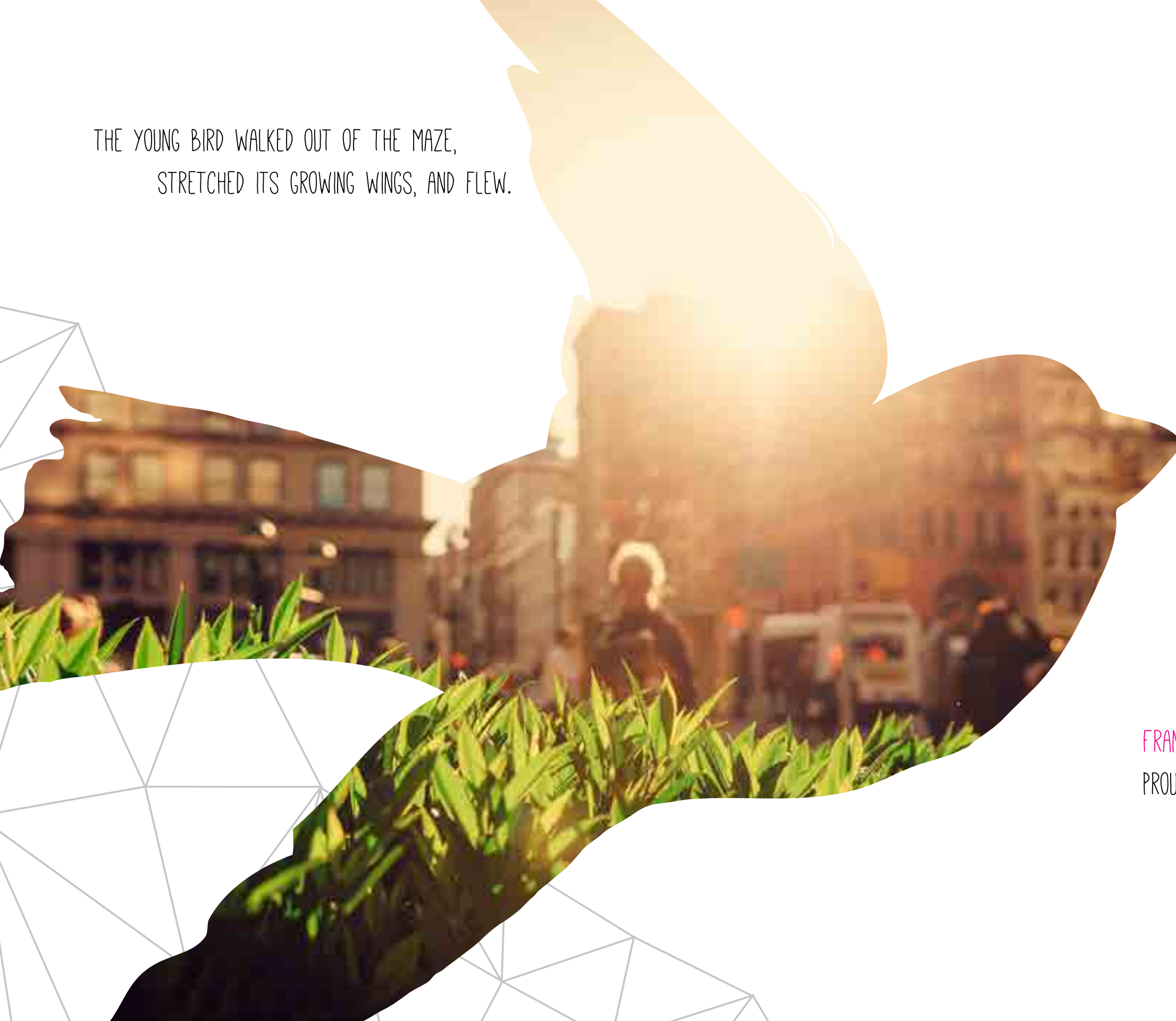


AND AFTER MANY CURVES, A FEW CORNERS, AND
MORE THAN ONE DEAD END...

YESS helps young people between the ages of 15 and 20, and not all are homeless.

- More than 68% have been physically, sexually, or emotionally abused.
- An increasing number are refugees or immigrants.
- Many try to numb the pain using drugs or alcohol.
- An increasing number have serious mental health problems.
- Many have been abandoned by their parents or thrown out of their homes.

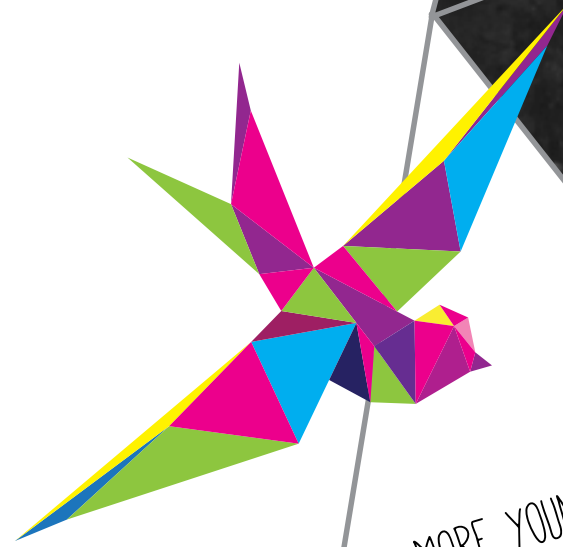
THE YOUNG BIRD WALKED OUT OF THE MAZE,
STRETCHED ITS GROWING WINGS, AND FLEW.



FRANCIS BEAMED WITH JOY,
PROUD AS PUNCH TO SEE THE YOUNG BIRD

SOAR.

BUT AS FRANCIS FLEW BACK OVER THE MAZE,
SOMETHING CAUGHT HIS EYE.



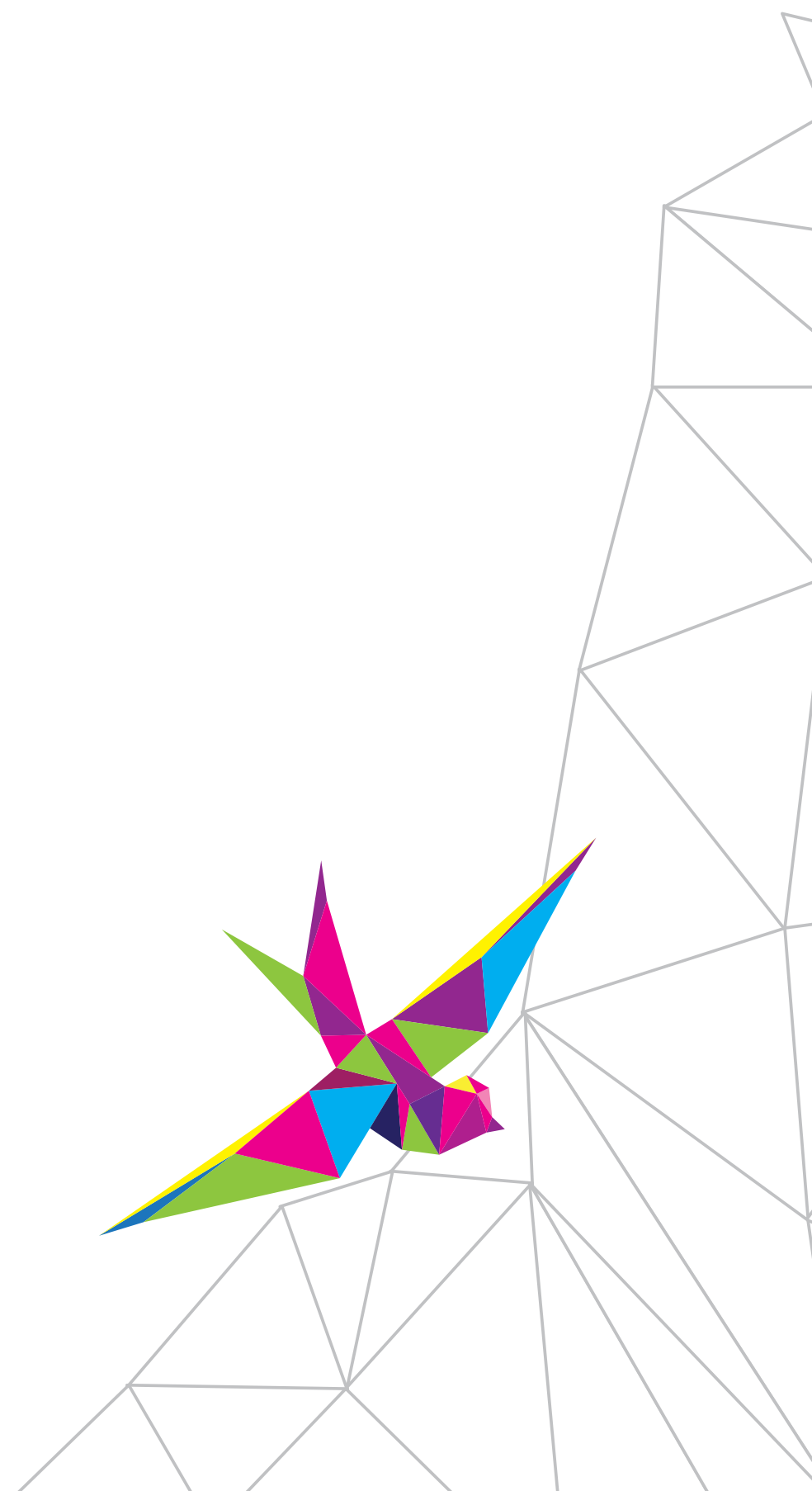
MORE YOUNG BIRDS.

ALL LOST IN THE MAZE.

ALL TOO YOUNG TO
SPREAD THEIR WINGS.



AND FRANCIS WAS DETERMINED TO HELP.



Every year, YESS makes a significant difference in the lives of Edmonton's youth. Listed below are just a few of the highlights that have resulted from your support.

NEXUS

- Four teens were successfully transferred into long-term housing.
- We adjusted program to support youth with jobs by allowing them to reserve their bed on nights they work late.
- Staff took Nexus clients to see the fireworks on Canada Day.
- We organized a camping trip for Nexus and ARC clients.
- Two youths accessed mediation with their families and returned home.
- Two youths who had previously been very street-entrenched and unmotivated asked for support and started making positive changes (getting mental health support and trying to get back into school).
- We held a joint Christmas sleepover at ARC.
- We started monthly "sleep-in days" for the youth, with hot brunch provided.
- We started a client feedback initiative to improve the program.

ARC

- We started an AHS-run addictions treatment program held every two weeks.
- Youth experienced Aboriginal culture by attending sweat lodge ceremonies and meeting elders.
- We established partnerships with CASA, Inner City Victim Services, Boyle Street Medical Centre, Ben Calf Robe Society, HIV Edmonton, Poundmakers Lodge, and Elk Island Retreat.
- Staff took clients on day trip to Sylvan Lake.
- Clients suggested holding an open mic night and started planning.
- Volunteers held a Christmas party for the clients.
- We helped three youths access YOUCAN's Verto Project (employability skills).

MOSAIC

- 15 youths requested to be part of the program in its first month.
- One youth was supported in returning to school and accessing appropriate mental health supports.
- One youth was supported in reconnecting with her biological mother.
- Ten youths were transitioned from the streets into Shanoa's Place by the Client Navigators (outreach workers).
- We facilitated positive relationships between YESS clients and the Edmonton Police Service.
- Client Navigators helped two youths access addictions treatment.

SHANOA'S PLACE & GRAHAM'S PLACE

- We successfully transitioned a client to independence.
- A client found employment.
- We supported a client in getting a file with CFS.
- A client was reconciled with her mother through mediation.
- Clients and staff made Thanksgiving dinner together.
- Staff and clients started a "homework buddy" system for youth to support each other in the new school year.
- We supported clients through high school diploma exams.
- We supported a youth in choosing to end a very unhealthy relationship.
- Four youths were transitioned to permanent homes.
- Two youths were accompanied to their graduation ceremonies and banquets.
- A youth found full-time summer employment.
- Staff helped a youth who had been involved with the criminal justice system navigate his probation and find a job.
- Clients took charge of calling and chairing their own house meetings.
- We helped a youth apply to post-secondary education.
- We watched one youth star in his school play.

COMPASS

- A youth who had previously refused to access counselling signed up for animal-assisted therapy through Compass.
- We helped a youth with serious mental health concerns get accepted and settled into an appropriate residential program.
- We provided blankets and stuffed animals to help a youth get a better sleep.
- We started taking clients for regular swimming trips (which they love!).
- We arranged for clients to experience nature at the Muttart Conservatory over the winter.
- The Compass Program was identified by two long-time YESS clients as the place they feel most safe.
- We committed to helping a client who is pregnant to stay sober.
- We started a journaling group for clients.
- We started regular healthy baking classes with clients, who are proud of the snacks they make together.

Every year, YESS makes a difference in the lives of Edmonton youth facing difficult realities, but there's so much more to be done.

Through the careful allocation of your donations, we're able to have a real impact on the lives of those who need it.

Please donate today.

Online Donations

Whether it's a one-time gift or an automatic monthly donation, please visit www.YESS.org/donate to pledge support. Our online donation form is fast, easy, and secure.

www.YESS.org

T 780.468.7070
F 780.466.1374

Audited financial statement is now available online at www.YESS.org



9310 – 82 Avenue
Edmonton, AB
T6C 0Z6



Revenue Canada Business No 12953-7437RR0001

facebook.com/YESSorg
twitter.com/YESSorg