

Facts & Figures



BUDGET & OPERATIONS

OPERATING BUDGET

 2017-2018 FISCAL YEAR
\$4,783,815

EXPENSES

2016-2017

Chronically homeless people cost taxpayers directly and indirectly over \$100,000 a year per person (EndPovertyEdmonton 2015). Our costs per youth are a fraction of that (7.2%). Preventing youth homelessness is both a prudent investment and the right approach to ending the cycle of homelessness.

 **AVERAGE COST PER CLIENT**
\$7,430/year

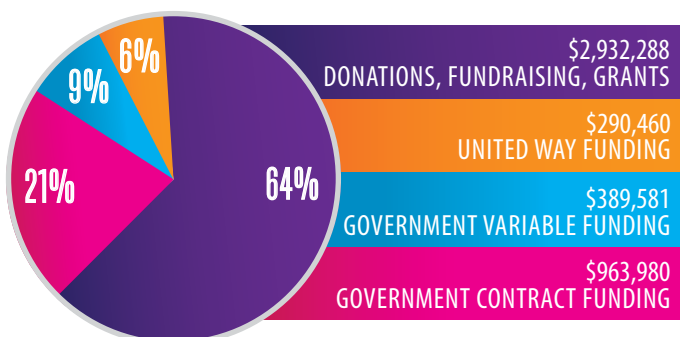
2% **FUNDRAISING**
\$78,615

8% **ADMINISTRATIVE**
\$373,412

77% **STAFFING (73 staff members)**
\$3,442,779

FUNDING

2016-2017



COLLABORATIVE APPROACH

Ending youth homelessness takes an entire community working together.



YES programs are fully aligned with the Alberta Plan to Prevent and Reduce Youth Homelessness (2014), Homeward Trust's Community Strategy to End Youth Homelessness in Edmonton (2015), and the EndPovertyEdmonton Plan (2016).



YES provides youth with multiple services, supports and resources, in one location. Our Armoury Resource Centre (ARC) provides co-located services where youth can find mental health and addictions help, employment opportunities and training, medical support, and connections to affordable, safe housing solutions.



Partnerships with community organizations such as Old Strathcona Youth Society, Edmonton John Howard Society, E4C, iHuman, and many more have helped bridge many gaps for youth in our community, addressing many needs including culture, diversity, spirituality, and more.

We are committed to actively collaborating with a range of essential non-profit partners and various levels of government to address the complex issue of youth homelessness, affect real change in Edmonton, and impact kids' lives.

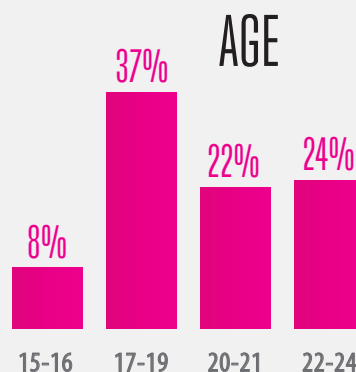
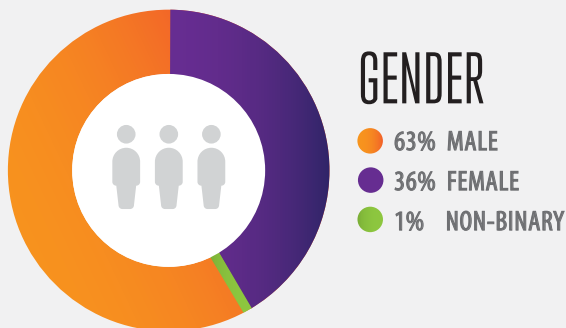


WHAT WE DO

YESS is relentlessly dedicated to empowering youth from difficult realities. Every day we save the lives of youth who are at risk and in crisis—and we have since 1981. An Edmonton-based non-profit agency, we were founded to fill the gap in government services for youth—a gap that still exists today. In addition to providing emergency shelter, we have expanded services to offer youth ongoing residential and support services as well as individual guidance. Our practice model, Trust-Based Relational Intervention® (TBRI®), is a non-judgemental, relationship-based approach to offer a more in-depth response to youth homelessness and its underlying causes.

WHO ARE OUR YOUTH?

YESS helps youth ages 15 to 24 who are experiencing homeless. Our youth come from all cultures, economic backgrounds, races, religions, communities, sexual orientations, and gender identities. The majority suffer from mental health conditions or substance abuse as a direct result of trauma suffered in an unstable home environment. Often our youth are not connected with Alberta Child and Family Services, leaving them without resources or financial support. As a result, our youth are seeking guidance, stability and a caring environment in which they can access the supports they need.



MENTAL HEALTH CONCERNS

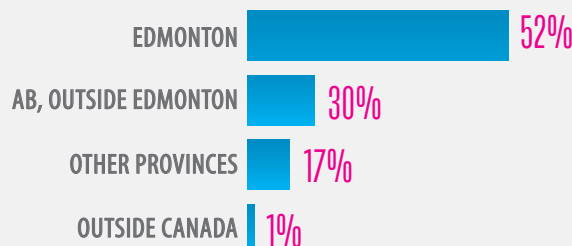
(self-reported*)

24%
MENTAL HEALTH ISSUES

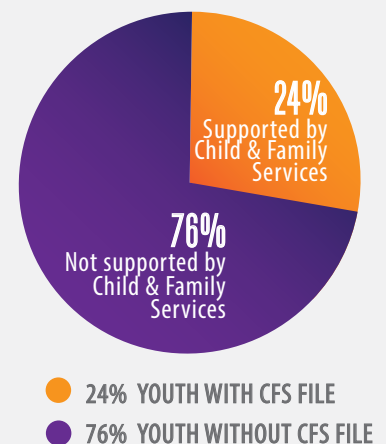
34%
ADDICTIONS ISSUES

13%
SELF-HARM/
SUICIDE IDEATION

GEOGRAPHIC ORIGIN



GOVERNMENT SUPPORT



* actual numbers may be higher

PROGRAMS & SERVICES



DAYTIME PROGRAMS

Through community partners, volunteers, and partner agencies, YESS provides youth with a range of programs and services:

- ▶ **Employment Readiness**
 - Money Management
 - Interview Skills
 - Training Certification
- ▶ **Interactive Art Programming**
 - Artist in Residence
 - Art Therapy
- ▶ **Recreational Activities**
 - Camping trips
 - YMCA outings
 - Monthly recreation programs
 - Yoga and meditation
- ▶ **Life Skills and Housing**
 - Supports
 - Workshops
 - Presentations
 - Outreach support in the home
- ▶ **Safe, non-judgemental drop-in socialization**
 - Meals
 - Open space
 - Internet use
 - Showers and Donation rooms



ACCREDITATION

YESS is proud to meet internationally recognized standards of practice as set out by the Commission of Accreditation of Rehabilitative Facilities (CARF). In 2015, CARF renewed YESS' accreditation for three years—the maximum length an agency can achieve—which reflects the level of professionalism undertaken by our staff.



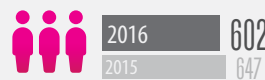
VOLUNTEERS

Volunteers fill various roles in youth support, administration, reception, maintenance, and event support.

325 INDIVIDUAL VOLUNTEERS
6,725 VOLUNTEER HOURS IN 2016

OUTCOMES & RESULTS 2016-2017

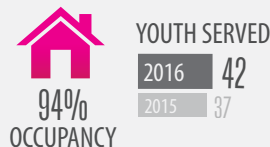
YOUTH SERVED



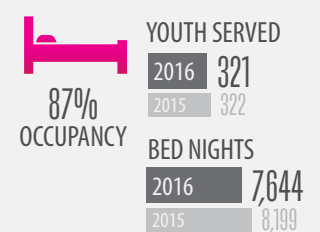
MEALS SERVED



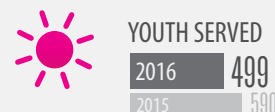
LONG-TERM RESIDENCE



EMERGENCY SHELTER



DAYTIME PROGRAMS



RESOURCES

COMMUNITY STRATEGY TO END YOUTH HOMELESSNESS
www.YEGYouthStrategy.ca

ALBERTA PLAN TO PREVENT AND REDUCE YOUTH HOMELESSNESS
www.YESS.org/AB-Youth-Plan

THE STATE OF HOMELESSNESS IN CANADA
www.HomelessHub.ca

10-YEAR ACTION PLAN FOR THE ELIMINATION OF POVERTY IN EDMONTON
www.EndPovertyEdmonton.ca

There is a story behind every number.

Contact us to find out more.

CONTACT

T 780.468.7070

W www.YESS.org

E giving@YESS.org

9310-82 Avenue,
Edmonton, AB T6C 0Z6

@YESSorg



YESS
youth empowerment & support services

