

YESS Annual Report

FISCAL 2018

YESS

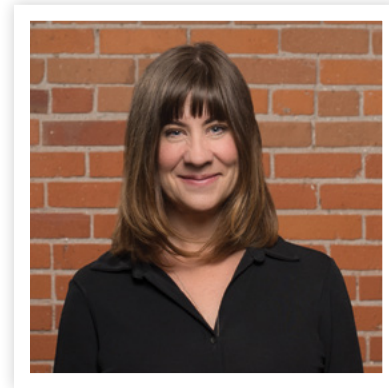
youth empowerment & support services



LETTER FROM THE EXECUTIVE DIRECTOR

Hello everyone,

For those that have not met me yet, I am the new Executive Director of YESS. The Fiscal 2018 year was one of excitement and transformation for YESS. We tried our hand at a trial community garden, which was hugely successful and educational, we said goodbye to long-time leader and champion Deb Cautley as she left for retirement on September 15, 2017, and we started on a new road towards what we believe is a powerful vision: To walk beside traumatized youth on their journey towards healing and appropriate community integration.



Our new vision is one that we believe focuses on one of the root causes of homelessness, addiction, abuse, and mental illness in our society: untreated trauma. Trauma can be defined as any form of abuse, neglect, abandonment, or violent experience that has a negative impact on the physical, emotional, and developmental well-being of an individual. Trauma affects the connections and healthy functioning of the brain and can also have a lasting impact on the ability to develop relationships. The youth we see are dealing with varying degrees of trauma and if this is not treated, the cycles of abuse, neglect, etc. continue and the likelihood to form healthy, trusting relationships is severely lowered.

Our vision also looks to extend the concept of “support” all the way to ensure our youth feel safely part of and valued within community.

With this new vision we have already begun to re-organize and adjust how we do things at YESS. You will see our new focus and how we fit into the national effort to end homelessness on page 4. We are very proud to share that we have created an internal youth trauma team to provide counselling, programming, and family support for our youth. The trauma team and trauma program will be one of the cornerstones of our efforts, in addition to more prevention and family connection work and community integration programs.

As we enter our Fiscal 2019 year we will keep our sights on the same things: financial sustainability, collaboration with our partners, and the realization of a better support system for youth experiencing inappropriate care and housing.

If this sounds like something you might like to get behind, come join us. There are lots of ways to help.

Margo Long, MA
Executive Director



LETTER FROM THE BOARD CHAIR

On behalf of the YESS Board of Directors, I would like to thank all of our members and advocates in Edmonton for your ongoing support for YESS and for sharing our vision of living in a community where such organizations are no longer needed.



Fiscal 2018 has been a year of significant change at YESS. After 18 years of dedicated leadership, vision, and mentoring, we said farewell to Executive Director Deb Cautley and wish her a healthy and relaxing retirement.

I am also very pleased to welcome a true community builder and visionary as our new Executive Director, Margo Long. Prior to joining our team, Margo had a long relationship with YESS, including leading the team from Incite Marketing in realigning the Youth Emergency Shelter Society name into Youth Empowerment & Support Services, which much more clearly defines what this agency has become for Edmonton youth facing difficult realities.

The entire Board shares the YESS team’s re-energized vision and plans of walking beside traumatized youth from 15 to 24 years old on their journey towards healing and appropriate housing. Our dedicated and selfless team faces great challenges in overcoming the challenges and traumas suffered by the many young people we serve, but believes collaboration with like-minded community members and organizations and building healthy relationships is key.

I am extremely pleased to share my excitement for YESS’ vision for the future of the agency, the community, and the youth who will find a place to heal at YESS. We are all part of the collaborative spirit that will make the YESS vision a reality. I hope you will continue to support this critical mission and join us on our journey to walk beside the youth of YESS.

Robert Blackwell
Chair, YESS Board of Directors

Fiscal 2018 Board of Directors

Robert Blackwell – Chair

Ashley Janssen – Vice Chair

Colin Lipsett – Secretary

Steven Ewaskiw – Treasurer

Joe Cairo – Director

Ryan Collins – Director

Ayden Harty – Director

Brenda LePage – Director

Sheldon Magnes – Director

Marcela Mandeville – Director

WE HAVE A NEW VISION!

To walk beside traumatized youth on their journey towards healing and appropriate community integration.

Our Vision Through A National Lens

The National Mandate from *A Way Home Canada* and the *Canadian Observatory on Homelessness* is to focus much more on prevention and exit out of homelessness, to ensure we are not simply providing shelter but also working to eliminate root causes and helping youth build their own safe integration into community.

YESS has envisioned and designed its programming to follow this mandate and to ensure better success of community integration for youth.

WHAT WE DO

Based in Edmonton, Youth Empowerment and Support Services (YESS) provides immediate and low-barrier shelter, temporary housing, and individualized wrap-around support for youth ages 15–24.

We focus on working collaboratively with our youth-supporting partners on prevention and diversion out of homelessness. And ultimately, we aim to walk beside traumatized youth as they heal through relationships.

OUR VISION... AT A GLANCE



National Focus

(from *A Way Home Canada* and the *Canadian Observatory on Homelessness*)

Funding and Programming Priorities



YESS Focus: Transition Through Trauma

Youth Stages



Current YESS Programs Areas:

Intake

- Nexus Shelter Program
- Harm Reduction Program

Crisis Management

- Youth Trauma Program
- Staff Wellness Program
- Armoury Resource Centre (ARC) Wrap-around Services and Drop-in Centre

Diversion and Prevention

- Shanoa's Place and Graham's Place Live-in Programs
- Art Therapy Program
- Employment and Life Skills Program

Community Integration

- Family Connections Program
- Apprenticeship Programs:
 - YESS Painting Ltd.

Edmonton Youth-Supporting Agencies Programs (a sample)

Fair For Youth – Collaboration with EPS

The Mustard Seed – Neighbour Centre

Boyle Street – Youth Unit

iHuman – Links Mental Health Clinic

Old Strathcona Youth Society – Drop-in Centre

Southside Primary Care Network (PCN) – Medical Support

Homeward Trust+E4C+JHS – Youth Housing First

iHuman – Arts Programming and Drop-In Centre

John Howard Society (JHS) – Nova House and The Loft

E4C – The Hallway Café

Boyle Street Ventures

OUR FOCUS

- 1. We focus on prevention and diversion out of homelessness
- 2. We focus on healing trauma through relationship
- 3. We focus on walking beside youth to minimize falling through gaps
- 4. We focus on collaboration (with everyone)

What Does This Mean?


 **We focus on prevention and diversion out of homelessness**

What is prevention?

Prevention means providing proactive resources for youth and their caregivers before youth become homeless. To be effective, resources must work alongside similar programs provided by the network of organizations addressing homelessness to create a beneficial experience for anyone seeking preventative assistance.

What is diversion?

Diversion means finding appropriate housing for youth before they become entrenched or as an exit out of homelessness. This may include continuing to connect youth with resources from the network of organizations addressing homelessness in Edmonton once they have been housed.

 **We focus on healing trauma through relationship**

What is trauma?

Trauma means any form of abuse, neglect, abandonment, or violent experience that has a negative impact on the physical, emotional, and developmental well-being of an individual. Among many other serious effects, trauma can have a lasting impact on the ability to develop healthy relationships.

 **We focus on walking beside youth and minimizing barriers to resources**

What are barriers?

Barriers are policies or expectations that put resources out of reach of those who need them. These restrictions often prevent people from seeking help.

 **We focus on collaboration**

What is collaboration?
Collaboration means working together with other organizations and in line with local, provincial, and national plans to create a holistic approach to addressing homelessness. Experience with youth who are in crisis means bringing their unique needs and specialized solutions to conversations and strategies about this population.

YESS PROGRAMS

Overnight Shelter

Our 24-bed emergency overnight shelter, Nexus, is the first step to preventing youth homelessness and helping youth exit homelessness. This program gives youth a safe, secure, and immediate place to stay when experiencing homelessness. The shelter opens at 9PM every night and provides access to food, dorms, showers, and personal items like jackets, backpacks, toothbrushes, shoes, etc. from the donation room. The shelter also operates with a harm reduction approach by accommodating youth who are under the influence of drugs or alcohol.

During their time at the shelter, youth are supported in identifying and working on the goals they set for themselves, identify new resources and services based on their needs, and start the process of building trust and healthy relationships. Youth leave the shelter program at 8:30AM and are transported to the drop-in resource centre for the day, if they wish.

- 313 YOUTH SERVED
- 6183 MEALS SERVED
- 60% SHELTER OCCUPANCY

Daytime Resource Centre

The Armoury Resource Centre (ARC) is home to a variety of daytime programs, including medical care, addictions and mental health counselling, help with continuing education and employment, art therapy and programming, recreational activities, life skills and employment readiness, and help with housing resources.

Staff at ARC work to build trusted relationships with youth, help the youth identify their own goals, and walk with the youth as they begin to heal from the relationship trauma they have experienced. ARC also operates with a harm reduction approach towards youth with addictions by providing a non-judgmental environment to feel safe in and by providing a needle disposal and exchange program. The goal of ARC is to support youth on the path to healing from their trauma and helping them see themselves as valued members of the community.

- 674 YOUTH SERVED
- 1663 HOURS OF PROGRAMS
- 7641 MEALS SERVED

Transitional Residence

For youth who need the stability and support of a longer-term placement than our shelter, we have two residences that provide a homelike environment while youth work on their goals: Shanoa's Place and Graham's Place. Youth in our residence program are taught to identify realistic and individualized goals that will help propel them forward in their journey towards healing and independence. The stability and resources provided help them to achieve their own identified successes, as well as build healthier relationships and community presence.

- 42 YOUTH SERVED IN BOTH HOUSES
- 85% AVERAGE OCCUPANCY IN BOTH HOUSES



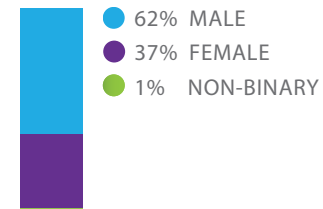
OUR NUMBERS

YESS helps youth ages 15 to 24 who are experiencing difficult realities such as addiction, abuse, homelessness, etc. Our youth come from all cultures, economic backgrounds, religions, communities, sexual orientations, and gender identities. Our youth have had many traumatic experiences which, unaddressed, create self esteem, self worth, and self

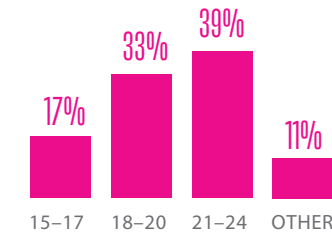
regulation issues. Often our youth are not connected with Alberta Children's Services, leaving them without resources or financial support. As a result, our youth are seeking guidance, stability, and a caring environment in which they can access the supports they need.

Based on 781 unique youth served in Fiscal 2018

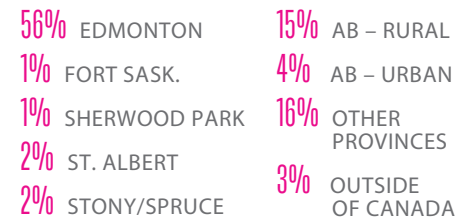
GENDER



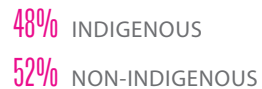
AGE



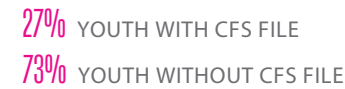
GEOGRAPHIC ORIGIN



ETHNICITY



GOVERNMENT SUPPORT



MENTAL HEALTH CONCERNS



LGBTQ2S+



Accreditation

YESS is proud to meet internationally recognized standards of practice as set out by the Commission of Accreditation of Rehabilitative Facilities (CARF).

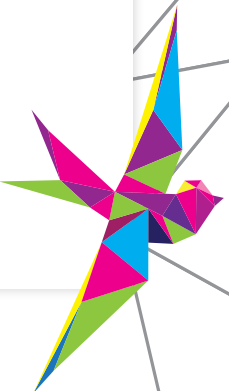


STATEMENT OF OPERATIONS

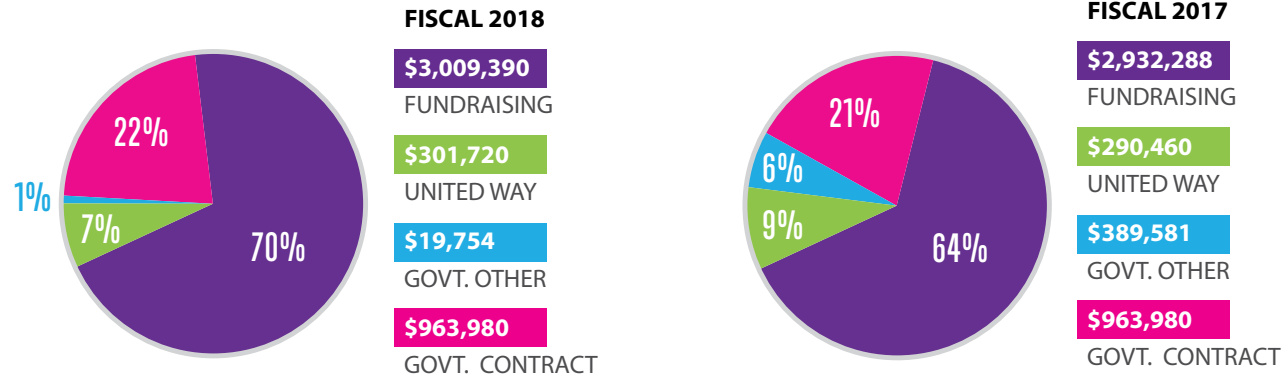
For the year ended March 31, 2018 with comparative figures for 2017

	2018	2017
REVENUE		
Unrestricted Revenue:		
Children's Services – Edmonton Region	\$ 963,980	\$ 963,980
Donations	1,630,756	1,450,205
Special Fundraising Events (net)	575,733	655,696
Loss on disposal of tangible capital assets	(14,350)	(8,137)
Investment Income	50,356	52,001
Other revenues	45,333	41,531
United Way	301,720	290,460
Total Unrestricted Revenue:	3,553,528	3,445,736
Restricted Revenue:		
Casino and raffle	136,047	140,135
Donations	383,484	175,236
Government Grants	19,754	37,012
City of Edmonton	75,000	68,750
Homeward Trust Foundation	-	352,569
Grants – other	-	229,795
Amortization of deferred capital contributions	127,031	127,076
Total Restricted Revenue:	741,316	1,130,573
Total Revenue:	4,294,844	4,576,309
EXPENSES		
Wages and benefits	3,708,667	3,442,779
Direct client	128,341	84,451
Facility	248,324	291,058
Administrative	364,516	373,412
Fundraising	80,493	78,615
Amortization	195,499	202,382
Total Expenses:	4,725,840	4,472,697
Excess of (expenses) revenue for the year	\$ (430,996)	\$ 103,612

Please visit yess.org/about-us/our-impact to read our audited financial statements.



FUNDING



*Fundraising includes donations, internal/external events, and grants.

EXPENSES

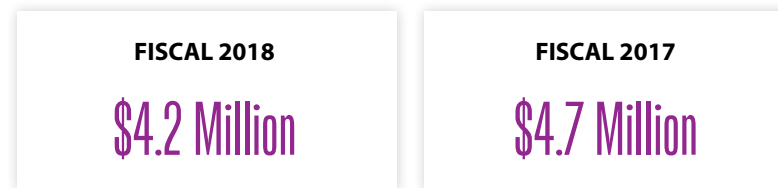
Chronically homeless people cost tax payers directly and indirectly over \$100,000 a year per person (EndPovertyEdmonton 2015). Our costs per youth are a fraction of that amount (~6%). Preventing youth homelessness is both a prudent investment and the right approach to ending the cycle of homelessness.

	FISCAL 2018	FISCAL 2017
AVERAGE COST PER YOUTH*	\$6,051/year	\$7,430/year
FUNDRAISING COSTS	\$80,493	\$78,615
ADMINISTRATIVE COSTS	\$364,516	\$373,412
STAFFING**	\$3,708,667	\$3,442,779

*Fiscal 2018 – 781 unique youth served; Fiscal 2017 – 602

**Fiscal 2018 – 72 Staff Members; Fiscal 2017 – 73 Staff Members

OPERATING BUDGET



YESS SUPPORTERS

Over half of our operating budget relies on donations from organizations and individuals in our community. Thanks to our amazing donors, we're able to provide programs and resources for youth and walk beside them on their journey towards healing and appropriate community integration.

We would like to give a special thanks to the following donors for being some of our greatest supporters this past year.



- | | | |
|---|-------------------------------------|--|
| 41 Service Battalion | Peter & Cathy Faiazza | Paul Shufelt, Workshop Eatery |
| Alberta Investment Management Corporation (AIMCo) | Edward Graham | Rene & Lisa Cloutier |
| Alberta Milk | Keith & Laura Graham | Rexall Foundation |
| Alberta Pork | Grasschopper Landscaping | River City Events |
| Boston Pizza Northern Alberta | Impark | Sonic 102.9 |
| Dave & Gwen Burroughs | Inland AV | The Home Depot Canada Foundation |
| Butler Family Foundation | John Brooks Company Limited | The Melton Foundation |
| Collin Bruce Mortgage Team | Kiwanis Club of Edmonton | The Organic Box |
| Cowan Imaging Group | Oil Capital | The Sherlock Holmes Hospitality Group |
| Darren & Laurel Durstling | La Maison Simons | Trailblazer RV Centre Ltd. |
| DynaLIFE Dx | Ledcor Group of Companies | United Way of the Alberta Capital Region |
| Edmonton Arts Council Society | Midnight Integrated Financial Inc. | Wheaton Family Foundation |
| Edmonton Community Foundation | Nordic | |
| Edmonton International Airport | One Step Beyond Photography & Video | |
| Edmonton Oilers Community Foundation | Pattison Outdoor Signage | |

There is a story behind every number.
Contact us to find out more.

YESS

youth empowerment & support services



T: 780.468.7070

E: giving@yess.org

9310 82 Avenue
Edmonton AB T6C 0Z6

www.YESS.org

@YESSorg

