

# YESS Annual Report

2018/2019





## Board of Directors

**Robert Blackwell**, *Chair*

**Ashley Janssen**, *Vice Chair*

**Colin Lipsett**, *Secretary*

**Steven Ewaskiw**, *Treasurer*

**Richard Iwaniuk**, *Director*

**Joe Cairo**, *Director*

**Ayden Harty**, *Director*

**Brenda LePage**, *Director*

**Marcela Mandeville**, *Director*

**Carrie Lentz**, *Director*

# MESSAGE FROM THE PRESIDENT & CEO



Hello everyone,

It has been an exciting year of growth and change for us here at YESS. After revisiting the purpose of our organization to walk beside traumatized youth on their journey towards healing and appropriate community integration, we set out to ensure we had a strong foundation to do this work.

We also spent 2018/2019 focusing on building awareness around the cause of youth trauma and how important community connection is for our youth's success. I am proud and inspired by the response of our community members and partners who are interested in educating themselves on how they too, can be part of the solution. Awareness is the first step to preventing homelessness and we have seen the community open themselves up to being aware of the trauma our youth face. We have heard from donors, community groups, neighbourhoods, partners, and natural supports that they have heard the messages we are sending and are ready to take action and walk beside us and the youth.

So what is next for 2019/2020?

This next year we will be working with our municipal, provincial, and national partners to adjust our services and strategy to be truly focused on the prevention of youth homelessness. This will mean working to build awareness of the work we and others have done in trauma as well as restructuring our services to ensure we are focusing on early intervention, housing stabilization, eviction prevention, and community support.

We invite you on our journey to prevent youth homelessness and create a healing path into community. Are you in?

**Margo Long** *President & CEO | Youth Empowerment and Support Services*

## LETTER FROM THE BOARD CHAIR

On behalf of the YESS Board of Directors, I would like to thank all our members as well as the donors, volunteers, and partners who are part of the community walking beside youth on their journeys towards healing and appropriate community integration.

YESS President & CEO Margo Long and the amazing team at YESS have made great strides this past year in collaborating with other local and national organizations that support vulnerable youth, developing an innovative model for trauma care and programs that meet youth where they're at. Every youth in our community should have a safe place to go. It is up to all of us to ensure no one is left behind.



It's an exciting and energizing time to be involved with YESS, with a real feeling of optimism for a better future for Edmonton youth experiencing trauma and crisis. We hope you will continue to support YESS' vision and join us in creating a community where we can all heal together.

**Robert Blackwell** *Chair, YESS Board of Directors*

# YESS: YOUTH EMPOWERMENT & SUPPORT SERVICES

## OUR VISION

To walk beside traumatized youth on their journey towards healing and appropriate community integration.

## WHAT WE DO

Based in Edmonton, Youth Empowerment and Support Services (YESS) provides immediate and low-barrier shelter, temporary housing, and individualized wrap-around support for youth ages 15–24.

We focus on working collaboratively with our youth-supporting partners on prevention and diversion out of homelessness. And ultimately, we aim to walk beside traumatized youth as they heal through relationships.

## OUR STRATEGIC GOALS

### **Financial Stability:**

The five year goal for YESS is to create sustainable and potentially independent revenue and become more in control of its operation and destiny.

### **Collaboration and Leadership at all Levels:**

The five year goal for YESS is to establish a strong collaborative internal culture based on coaching and leadership at every level, and to carry this collaboration all the way to the national government and agency level.

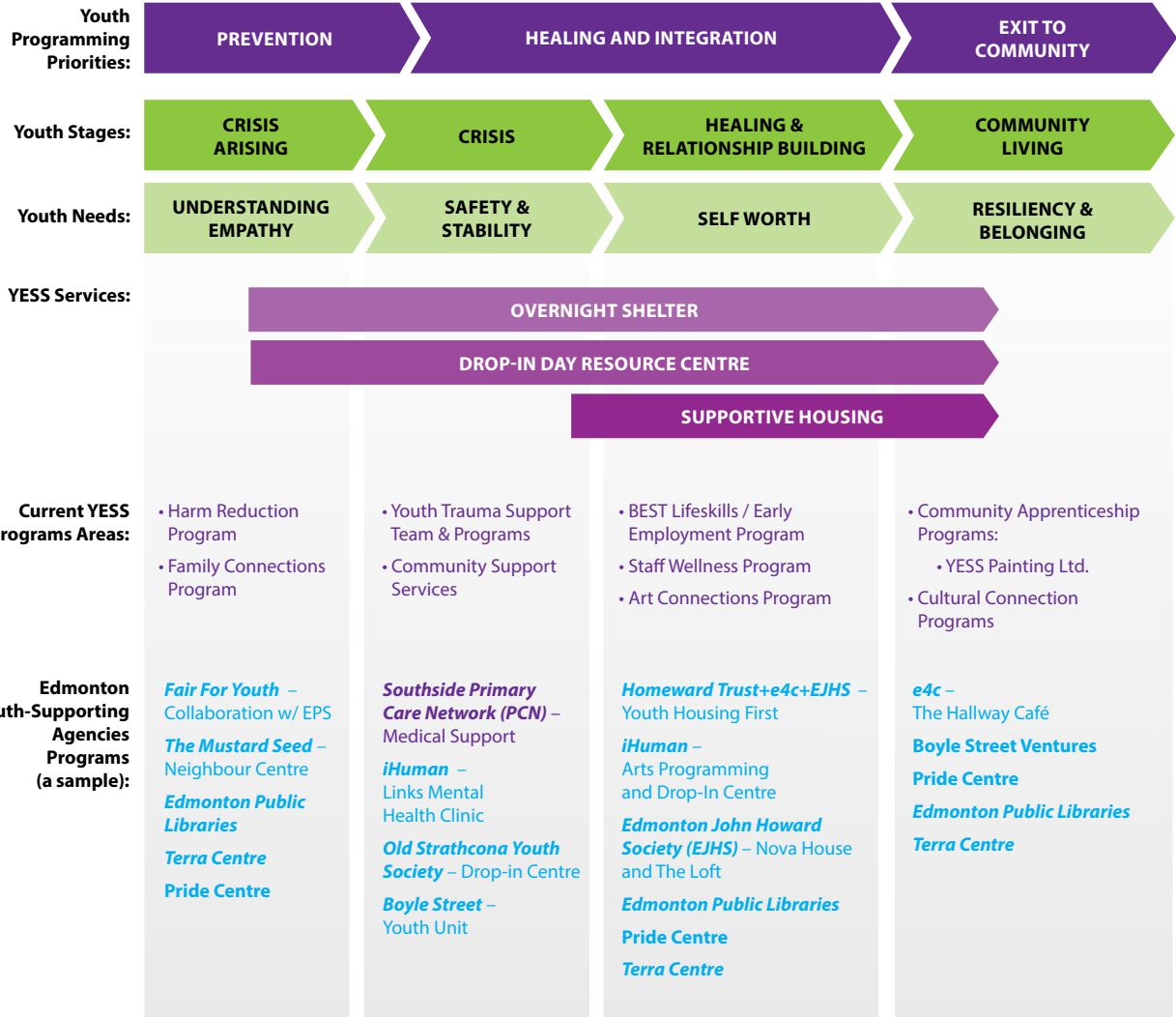
### **National Leadership in Youth Trauma Programming:**

The five year goal for YESS is to research, develop, and implement youth trauma programming within our own organization and to create a scalable, repeatable programming model to sit within the system to end youth homelessness.



# OUR MODEL TO ADDRESS YOUTH TRAUMA

## YESS Focus: Transition to Healing and Community Integration



# OUR PROGRAMS

**729** Total clients served in 2018/2019

## Supportive Housing

Youth Empowerment and Support Services (YESS) provides two supportive housing facilities: Graham's Place located at the Whyte Avenue location and Shanoa's Place located on the west end of Edmonton. For youth who need the stability and support of a longer-term placement than our shelter, our two residences provide a homelike environment while youth work on their goals. Youth in our supportive houses are taught to identify realistic and individualized goals that help them move forward in their journeys towards healing and independence. Our purpose is to walk beside the youth in a more stable environment to help facilitate safe and appropriate community integration.

## Daytime Resource Centre

The Armoury Resource Centre (ARC) is home to a variety of daytime programs, including medical care, addictions and mental health counselling, help with continuing education and employment, art therapy and programming, recreational activities, life skills and employment readiness, and help with housing resources. ARC provide youth with basic needs and shelter from the elements with the support of non-judgemental staff in a safe place to hang out without the fear of loitering or trespassing charges. At ARC, our youth have a safe place to come where they can build, on their own terms, relationships with our staff. Our staff focus is on establishing trust with our youth so that they will see themselves as worthy of care and compassion, building positive relationships with staff that encourage growth and self-confidence.

## Overnight Shelter

Our 24-bed overnight shelter, Nexus, gives youth a safe, secure, and immediate place to stay when experiencing homelessness. The shelter opens at 9PM every night and provides beds for sleeping, basic needs like food, clothing, showers and laundry, school supplies, and packed lunches for youth attending school. This is a safe place for all youth with support and access to staff who are trained to deal with diverse client needs. We are LGBTQ2S+ friendly. We have harm reduction minded staff, with suicidal ideation intervention and safety planning. Youth who stay in shelter will also receive justice support from staff. Our organization works closely with EPS beat officers to understand charges and pathways. Our staff also work with youth to review judicial documents and assist with reminders for appointments and court dates. Staff work to build community support connections before youth leave program to ensure supports exist beyond their time at YESS.

**100%** Clients who have experienced trauma

**40%** Clients identifying as LGBTQ2S+

**161** Clients w/Childrens Services involvement (22%)

**568** Clients w/o Childrens Services involvement (78%)

**279** Female (38%)

**436** Male (60%)

**14** Non-Binary (1.9%)

**242** First Nations (33%)

**106** Métis (15%)

**8** Inuit (1.1%)

# OUR NUMBERS

## OVERNIGHT SHELTER

15-21  
yrs old



24 Youth Capacity

NIGHTLY 365  
9PM-9AM

Amenities:



Dinner at night & breakfast in the morning



Lockers to store belongings



3

Staff at once

**GOAL** SAFETY & STABILITY  
Basic needs and resource referral

## ARMOURY RESOURCE CENTRE

15-24  
yrs old



50-60 youth capacity

DAYTIME PROGRAMMING

Amenities:



5 Areas of Service

1. Education & Employment
2. Health & Wellness
3. Safety & Trauma Support
4. Recreation & Art
5. Life Skills



3

Staff at once

**GOAL** HEALING & INTEGRATION  
Goal setting, resource work, relationship building

## SUPPORTIVE HOUSING

15-21  
yrs old



16 Youth capacity -  
8 at each location

365  
24/7

**GOAL**  
HEALING & INTEGRATION  
Support, structure, boundaries, and nurturing

Amenities:



1-2

Staff at once

# STATEMENT OF OPERATIONS

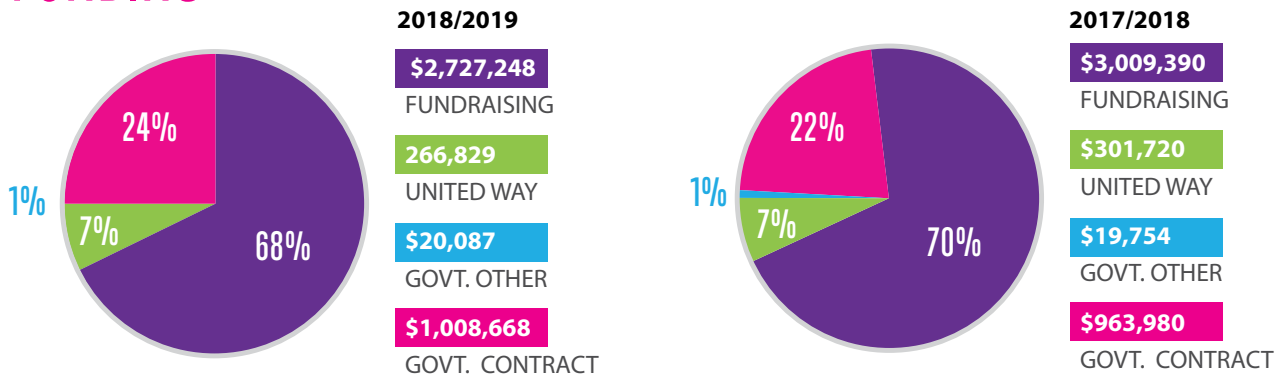
For the year ending March 31, 2019, with comparative figures for 2017/2018

	2018/2019	2017/2018
<b>REVENUE</b>		
<b>Unrestricted Revenue:</b>		
Children's Services – Edmonton Region	\$ 1,008,668	\$ 963,980
Donations	1,514,472	1,630,756
Special Fundraising Events (net)	389,189	575,733
Loss on disposal of tangible capital assets	(103)	(14,350)
Investment Income	(5,291)	50,356
Other revenues	67,972	45,333
United Way	266,829	301,720
<b>Total Unrestricted Revenue:</b>	<b>3,241,736</b>	<b>3,553,528</b>
<b>Restricted Revenue:</b>		
Casino and raffle	73,649	136,047
Donations	477,378	383,484
Government Grants	20,087	19,754
City of Edmonton	75,000	75,000
Grants – other	-	-
Amortization of deferred capital contributions	134,982	127,031
<b>Total Restricted Revenue:</b>	<b>781,096</b>	<b>741,316</b>
<b>Total Revenue:</b>	<b>4,022,832</b>	<b>4,294,844</b>
<b>EXPENSES</b>		
Wages and benefits	3,448,306	3,708,667
Direct client	106,626	128,341
Facility	245,705	248,324
Administrative	616,104	364,516
Fundraising	89,631	80,493
Amortization	227,184	195,499
<b>Total Expenses:</b>	<b>4,733,556</b>	<b>4,725,840</b>
<b>Excess of (expenses) revenue for the year</b>	<b>\$ (710,724)</b>	<b>\$ (430,996)</b>

Please visit [yess.org/our-impact](http://yess.org/our-impact) to read our audited financial statements.



# FUNDING



\*Fundraising includes donations, internal/external events, and grants.

YESS is generously supported by:



# EXPENSES

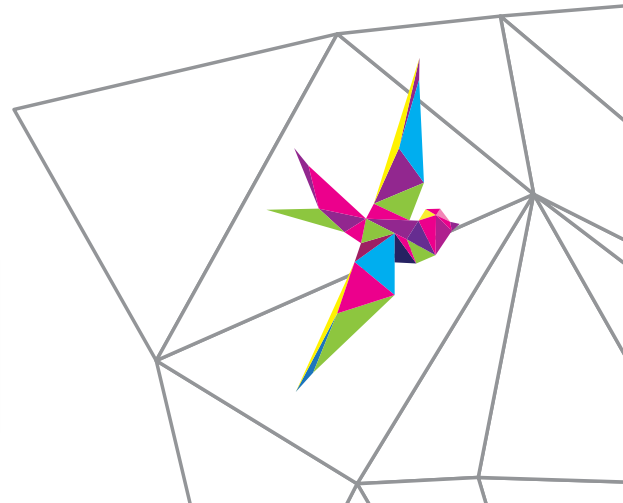
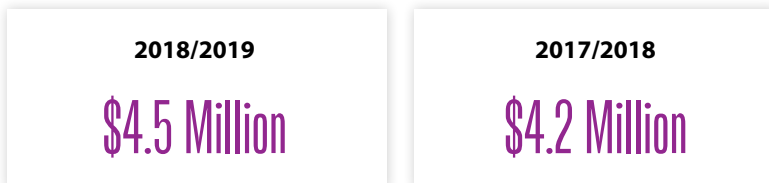
It currently costs just over \$6,000 to serve one youth at YESS for one year, compared to the over \$100,000/year (EndPovertyEdmonton 2015) it costs to serve one entrenched and addicted homeless adult. Preventing youth homelessness is both a prudent investment and the right approach to ending the cycle of homelessness.

	2018/2019	2017/2018
AVERAGE COST PER YOUTH*	\$6,493/year	\$6,051/year
FUNDRAISING COSTS	\$89,631	\$80,493
ADMINISTRATIVE COSTS	\$616,104	\$364,516
STAFFING**	\$3,448,306	\$3,708,667

\*2018/2019 – 729 unique youth served; 2017/2018 – 781

\*\* 2018/2019 – 76 Staff Members; 2017/2018 – 72 Staff Members

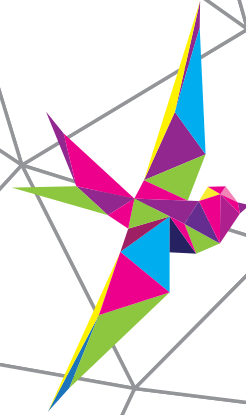
# OPERATING BUDGET



# YESS SUPPORTERS

Thanks to our amazing donors, we're able to provide programs and resources for youth and walk beside them on their journeys towards healing and appropriate community integration.

We would like to give a special thanks to the following donors for being some of our greatest supporters this past year.



1251211 Alberta Ltd.	Arndt, Richard W. & Shannon M.	Bremault, Donald	Cintas Uniform Services	du Heaume, Alan & Jane	Erickson, Kenneth & Sunita	Green, Geoffrey Reid
1391151 Alberta Ltd Adara Hair & Body	ATB Financial	Brisseau, Michael	Clean Harbours Canada Inc.	Duggan, Tyler	Ernst, Thomas	Groom Langford Jones
1479755 Alberta Ltd.	ATCO Pipelines	Brodeur, Emily Madeleine	Cloutier, Rene & Lisa	Dyna - Flo Social Club	Ethel Cuts Chapter IODE St. Albert	Gross, Douglas
15 Edmonton Service Battalion Society	Balding, Colleen	Brown, Jack	CN Employees' and Pensioners Community Fund	Eamer, Gilgamesh Erin	Everitt, Lisa	Gryphon Benefits & Insurance
1748704 Alberta Ltd.	Bale, William & Karen	Browne, Beverley	Continental Group	Eday, David & Wendy	Faiazza, Peter	Gul-Co Management Corp.
199 Yellowbird Scouts	BBE Expediting Ltd.	Bruce, Collin & Janel	Cosmopolitan International Club of Edmonton	Edmonds, Michael & Tracy	Farrell Engineering Sales Inc.	Haines, Lonnie G
5 Days for the Homeless	Beacham, Alan & Jantien	Building Owners & Managers Assoc. of Edmonton	Costanzo, Michael & Christine	Edmonton & District CIBC Pensioner Association	Fath, Thomas	Halford, Margaret
Abraham, Sarah	Bearded Bad Boys of Alberta	Burdeyny, Cheri	Costco - Edmonton #258	Edmonton Catholic Schools	Fellowship Christian Reformed Church	Hammerlindl, Donna
Academy Dental	Beaverbrook Group LP	Burn, Morgan	Crossfit Armoury	Edmonton City Centre Church Corporation O/A E4C	Fersovitch, Danica	Harbinson, David & Catherine
Ackroyd LLP Barristers and Solicitors	Becker, Janet	Burnside, Donna	Crown Capital Partners Inc.	Edmonton Community Foundation	Fidelity Investments Canada Ltd.	Harder, Lyn
ACT/UCT Edmonton South 1017	Beechiner, Michael J.	Burroughs, Dave & Gwen	Crystal Glass Canada Ltd.	Edmonton Composting Facility Social Committee	Fiege, Elizabeth & Robert	Hardie, Erin
ACW Diocese of Edmonton	Bell, William	Bussiere, Heidi & Antoine	CSA Group	Edmonton Hebrew Association	Fillmore, Brent	Hardman, Ian
Adelsberger Rick & Kathryn	Belmont, John R. & Karen	Butler Family Foundation	CSU 52 Benevolent Society	Edmonton Lodge #11 of the Benevolent and Protective Order of Elks	Foster Park Brokers Inc.	Harrison, Gwen
AG Grant Development	Belzil, R. Paul & Gisele	Calaresu, Vittorio and Barb	Cullolden Holdings Ltd.	Edmonton Lodge #22 Royal Purple Association	Frank Colleen, & Darren	Harty, Ayden
Akram Attia Law Group	Bemount, Stephen & Jessie	Caldwell, Karonne	Darma Realty Services	Edmonton Millwoods Breakfast Lions Club	Fringe Theatre Adventures	Harvard Broadcasting
Alberta Browncoats Society	BenefAction Foundation	Cameron, Donald Bruce	Davis, Louise	Edmonton Needlecraft Guild	Fung, Cindy	Hathaway, Debra
Alberta Fish and Wildlife Policy Division	Berg, Aaron	Canadian Utilities Pensioners Association North	Dawson, Wendy J.	Edmonton North District Area Council 2	Gagnon, Andrew	Haven Management Ltd.
Alberta Health Services, Community Engagement & Communications	Berg, Kenneth & Sharon	Canadian Western Bank	DeBoer, Katie	Edmonton Pride Festival Society	Gap Inc.	Height, Gordon & Louise
Alberta Milk	Berkenbosch, Wendy-Anne	Cann, Murray & Margaret	Delnor Construction Managers	Edmonton South Side Primary Care Network	Garrity & Baker Drilling Inc.	Helmers, Leslie
Alberta Pork	Bertram, Edward	Canterra Developments Corp.	DelVillar, Rene	Elkhart, Stan & Marian	Geroll Management Inc.	Hemstock, Garrett
Alberta Union of Provincial Employees Local 001	Bethel Lutheran Church	Capilano Glass 2000 Ltd.	Deneka, Barbara	EFD Retirees Brigade	Gibson, James Neil & Twyla	Henkelman, Jeff & Cori
Allard Foundation Ltd.	BioWare ULC	Capital Power Corporation	Dentons Canada LLP / S.E.N.C.R.L.	Effing Seafoods	Gifford, Shirley I.	Henry Gusse Foundation
Alligator Pie Kidswear	Blair, Cameron & Lisa	CapServCo Limited Partnership	Deutscher, Joe & Lorrie	Ehrman, Zachary	Glangarry Community League	Hinz, Barbara
Amalgamated Mining & Tunnelling Inc.	Blake, Kathleen	Carlson Construction	Devon United Church UCW	Elixir Hair Studio	Good Shepherd Catholic Women's League	Holt, Pat
Ambrozic Christopher	Blanch, Morley & Valeria J.	Carson, Don & Mary	Catholic Parish of Assumption	Elk Island Catholic Transportation Association	Goss, Douglas	Holy Family Columbus Club
Anderson, Karen	Blush Lane Organic Produce Ltd.	Catholic Parish of St. John the Evangelist	Caudron, Mallory	Elliott, Victoria	Govan Brown & Associates Limited	Hope Lutheran Church Women
Anderson, Miranda	Borch, Kevin	Chabaylo, Joann	Chung, Patricia	Elton, W. Jacqueline & Martin C.	Grace, Darcie	Hopkins, Norma
Anonymous Monthly Donor	Boston Pizza Charity Golf Tournament	Chamaschuk, Shelly	CHIMP: Charitable Impact Foundation	EPCOR Water Services	Graham, Donna	Hosanna Lutheran Quilters
Appleyard Foundation	Boston Pizza Foundation	Charrois, Jennifer	CI Investments Inc.	Epp, Kimberly	Graham, Edward	Howden, Donald John T.
Aqueduct Foundation	Box Cars and One-Eyed Jacks	CHIMP: Charitable Impact Foundation			Graham, Keith & Laura	Hryciuk, Daniel & Laura
AR-EL Electrical Systems Ltd.	Brady, Leo				Graham, Edward	Hunder, Karen & Joseph
Arndt, Michael & Naomi	Brand Bloom				Graham, Keith & Laura	Hutton, James M
	Brandt, Val				Grant, Tim & Sharon	Huybregts, George J
	Brass, Mary Ann				Grasshopper Landscaping Ltd	I.C.E. Signs Inc.
	Breitkreitz, Linda				Gray, Gwyn	Inclusion Alberta Foundation
						Inglewood Christian Reformed Church

Innes, Richard B	Ledcor Projects Inc.	Miller Thomson LLP	Polish Canadian Womens Society of Edmonton	Schroeder, Inge	Standard General Inc.	United Way of Greater Toronto
International Brotherhood of Boilermakers Local 146	Leftover Company	Mills, Roy	Power, Samantha & Russell	Schulte, Fredrick J.	Stebblecki, Lisa	University of Alberta Department of Medicine
Investors Group Financial Services Inc.	Leonard, Paul E.	Mitchell, Jonathan	Prakash, Maija & Neeraj	Schweger Bell, Culley & Steven	Steeves, John & Sparkle	University of Alberta Hospital
Investors Group Financial Services Inc.	Leverit, Marie-Claude	MLC Group Inc.	Preferred Client Services Group Ltd.	Scott, Shirley A.	Stewart, Donna	University of Alberta Office of Sustainability
IODE Cooking Lake Chapter	Lickfold, John	Moores, David & Gail	Pridie, Brandon	Scuccato, Barbara	Stoppler Hughes	Ursulines of Jesus
Irwin, Clare & Thomasine	Lidkea, Joan	Morlidge, Bryan Q.	Procat Holdings	Seagate Contract Management Ltd.	Strathcona Community League	Vaculchik, Myrna
Ivanhoe, Cambridge II Inc	Lincoln, Rene	Naqvi, Javaid & Henrietta	Proctor, Robyn	Searle, Kathy	Styles, Craig	Van Herk, Esther
Iveson, Robert & Margaret	Liu, Jessica	Nash, David	PT Business Services Ltd.	Second Glance Clothes Ltd.	Suits By Curtis Eliot	Vansevenandt, James
Iveson, Don & Sarah Chan	Local No. 37 of the Edmonton Public Teachers' Association	Nature's Path Foods Inc.	Pure Class Dance Arts Association	Semchishen, Orest	Suncor Energy Foundation	VF Outdoor Inc. (Vans)
James, Barry L.	Loewen, Gordon & Jennifer	Nav Canada	Puttagunta, Lakshmi	Shankowsky, Leonard & Heather	Surepoint Technologies Group Inc.	Visser, David & Bonnie
James Sinclair Management Ltd.	Lomow, Carmen B.	Nelson, Peter B	QuadReal Property Group LP	Sheard, Chris & Dale	Szulhan, Myroslaw	Wacowich, Roderick
Jandhyala, Padmini	Lowe's Companies Canada ULC	Nicholson, Lise M. A.	Quinn, Elaine	Shelley and Guy Scott Family Foundation	Tarik Foundation	Walker, Kiersten
Jeffs, Allyson F.	Luth, Robert	Nikolic, Vic	Quintal, Juanette & Jerrid	Shepherd, Colleen	Teha, Patricia	WAM Development Management Corp.
JGR Communications Inc.	Maciaszek, Angela	Niven, Brenda & David	Ramsay, Claudia	Sheriff, Larry	TELUS Communications Inc.	Waste Management
Jobber	MacKenzie, Heather	Nordic Mechanical Services Ltd.	Raposo, John M. & Linda	Sherwood Park Royal Purple Charity Society	Temple, Norman J.	Weinrich Contracting Ltd.
John Brooks Company Limited	Mac's Convenience Stores	Norman McDonald Capital Corp.	Realtors Community Foundation	Shimizu, Tak	Ternovatsky, Neil	Wellens, Jane
Jolly, Brian & Elizabeth	Madsen, Stephen & Catherine	North Central Co-operative Association Ltd.	Reed, Karen	Shippers Supply	Tewitz, Ron & Dolores	Wenger, Julian
Jones, Corinne	Magnan, Lucille & Aime	Northern Materials Engineering Ltd.	Rempel, Theodore & Rita	Showtime Promotions	Tewitz, Samantha	West Edmonton Mall
Jones, David & Sharon	Magnes, Sheldon & Tami	Norwex Foundation for a Brighter Future	Renaud, Andree	Sielecki, Anita	Texcan	West Edmonton Mall Property Inc
Jopling, William & Denyse	Mah, Kevin	Nutting, Janet & Anthony	Resch, Gerd	Simons (West Edmonton Mall)	The 1492 Discovery Society	Western Association of Broadcast Engineers (The)
Judge, David & Colleen	Maley, Douglas & Glynis	O'Callaghan, Sheilagh	Right Choice Camps & Catering	Sinneave, Brune & James Rick	The Catholic Archdiocese of Edmonton	Westjettlers Culture Club
Kendall, Arthur & Burtine	Manderson, Ana	O'Connor, Kirby	Rip'N Shred Inc.	Skarupa, Michael	The Catholic Parish of Church of the Resurrection	Westminster Junior High School
Kenilworth Junior High School	Marcson Homes Master Builder	O'Day, Charles	Rivest, Daryl	Skauge, Linda	The City of Edmonton	White, Don & Bernice
Key, Scott & Lorie	Marian Centre	Ono, Megan	Robbins, Mary	Smokin' Barrels Food Truck	The Green Bottle Depot Windermere Ltd.	White Knight Construction Ltd.
Kin Club of Fort Edmonton	Marshall, Joshua	Order of Ahepa Aurora Borealis Chapter No CJ10	Robertson - Wesley United Church	Snyder, Robert & Carol	The Green Depot Fort McMurray Inc.	Whiting, Vonnie
King, Kenneth	Martin, Deeline	Oriental Band Society	Rock Hill Contracting Ltd.	Soil Savvy Inc.	The Leder Charitable Foundation	Whittaker, Adrian
Kinsman, Rita	Masse, Gerard	Orthodox Christian Clergy Brotherhood of Edmonton & Vicinity	Rock Jungle Crossfit	Solikoski, Marilyn & Stan	The Muttart Foundation	Witten LLP
Klapstein, R. Elinor	May, Cori	Overlanders Elementary School	Romanko, Ryan	Sonic 102.9	The Organic Box Ltd.	Wittenberg, Kathryn & Gerald
Knights of Columbus Archbishop O'Leary Council #4570	McCabe, Kathleen	Page, Cathy	Romanovsky & Associates Chartered Accountants	Sorensen, Valerie & Morten	The Orthodox Fellowship Club of Edmonton	Wolthuis, Albert
Kocken, Jen	McCartney, Scott & Kirsten	Page, Norma E.	Rona Inc.	Sourdough Raft Race Association	The Professional Institute of the Public Service of Canada	Wong, Winnie
Koe, Sandy	McColl, Sharon	Pagnotta Industries	Rongve, Douglas & Kathryn	South Edmonton Oral Surgery	The Sherlock Holmes Hospitality Group	Wood, Lois & Terry
Kooistra, Remkes B.	McFarlane, Neil	Pangman Development Corp.	Ross, John & Janet Beck	Southgate Audi	The South Alberta Light Horse Regiment Foundation	Woodman, John & Jill
Korthuis, Mark & Erin	McMillan, Kenneth A.	Pankratz, Allan & Laura	Rotary Club of Edmonton South	Southgate Centre	The Workshop Eatery Inc.	Woodvale Community League
Koufogiannakis, Denise	McMurdo, Muriel	Papulkas, Eileen & Stan	Rotary Club of Edmonton Southeast	Southtown Dodge	Thiessen, Linda L	Workers' Compensation Board Staff
Kozicki, Alexander Michal	McMurdo, Muriel	PARA - Professional Association of Resident Physicians of Alberta	Rotary Club of Edmonton Sunrise	Southview Acura	Thompson, Stephen & Marian	Wright, Cynthia
KPMG LLP	MCR West Ltd.	Paragon Soil and Environmental Consulting Inc.	Royal Alexandra Hospital Women's Auxiliary	St. Albert Community Information and Volunteer Centre	Thurber Engineering Inc.	Wright, Russell & Barbara
Kurylo, Joan & Steve	McTague, Carlene	Parlee McLaws LLP	Runnalls, Connie & Barry	St. Andrew's United Church Quilting Group	Torskeklubben of Edmonton	Wronko, Karen
Kuttler, Jochen	Mealshare Aid Foundation	Pasini, Gordon & Heather	Running Room Canada Inc.	St. Columba Anglican Church	Trinity Lutheran Church -Youth Group	Yanish, Giselle
Kwik Kwi Hers	Melcor Developments Ltd.	Patton, Fred	Ryan, Craig	St. David's Anglican Church	Trottier, Garry & Sharon	Young, Carl
la maison Simons	Melnychuk, Catherine S.	Peacock, Alex	Saher, Merwan N.	St. Dominic Savio CWL	Tse, Margaret	Youngman, Morgan
LaBerge, Robyn	Melnychuk, Helen E.	Pereira, Kimberley	Sametz, Joan	St. Francis Food Bank Association	Union 52 Benevolent Society	Your Ottewell Grocery
Lacie Foundation	Melton Foundation	Petrin Mechanical Ltd.	Sangster, Judith	St. John Bosco Catholic Parish	United Way of Calgary and Area	Zeschuk, Greg
Landmark Homes Employees	Memorial Composite High School	Piebiak-Patterson, Krista	Savage, Aileen Mary	St. Joseph Charities Society		Zimmer, Bent
Laricina Energy	Merhej, Tarek	Pirie, Donald	Schenk, Gesina	St. Paul's Foundation		Zitnak, Terry
Le Club La Verendrye	Middleton, Katherine	Platinum Holdings	Schoettle, Craig			
Leaf, Norman & Betty-Ann	Mikes, Sam		Schroeder, Andrea			
	Mill Woods Presbyterian Church					



**There is a story behind every number.  
Contact us to find out more.**

**T:** 780.468.7070

**E:** [giving@yess.org](mailto:giving@yess.org)

9310 82 Avenue  
Edmonton AB T6C 0Z6

**[www.YESS.org](http://www.YESS.org)**

**@YESSorg**



*Artwork by Allison Tunis, YESS Artist in Residence 2017–2018*