

YESS ANNUAL REPORT

2019/2020

Our Strategic Goals

Financial Stability:

The five year goal for YESS is to create sustainable and potentially independent revenue and become more in control of its operation and destiny.

Collaboration and Leadership at all Levels:

The five year goal for YESS is to establish a strong collaborative internal culture based on coaching and leadership at every level, and to carry this collaboration all the way to the national government and agency level.

National Leadership in Youth Trauma Programming:

The five year goal for YESS is to research, develop, and implement youth trauma programming within our own organization and to create a scalable, repeatable programming model to sit within the system to end youth homelessness.

Board of Directors

Robert Blackwell, *Chair*

Richard Iwaniuk, *Vice Chair*

Colin Lipsett, *Secretary*

Steven Ewaskiw, *Treasurer*

Alessandra Bruni, *Director*

Ayden Harty, *Director*

David Jones, *Director*

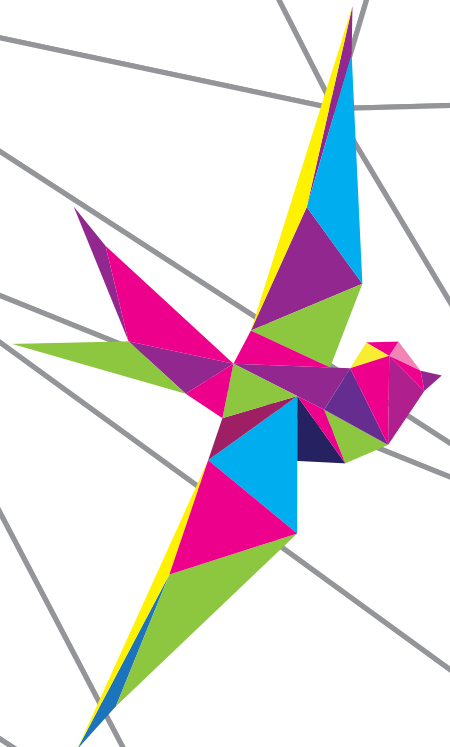
Brenda LePage, *Director*

Trish Kushniruk, *Director*

Emma Wynters, *Director*

Cynthia Zutter, *Director*

Amanda Kim, *Associate Director*



MESSAGE FROM THE PRESIDENT & CEO



Hello everyone,

I am pleased to present our Annual Report for the 2019/2020 fiscal year. We are very proud of our accomplishments over the last year and you will see that we have not only continued to build on the trauma-informed, intentional healing and integration for young people, we have also brought our financial situation to a much more sustainable position and I believe we are on our way to reach our financial strategic goal by March 31, 2023.

This has been a year of big emotions at YESS as it has for the rest of the world. The first half of fiscal 2019/2020 was focused on rebuilding revenue and bringing YESS out of deficit. The end of our fiscal year was focused on responding to our first global pandemic. I have never been more proud of our team as I have been watching all departments and levels of staff respond quickly, creatively, and collaboratively to an urgent and potentially dangerous situation for staff and young people. Our COVID-19 response has been outstanding, in my opinion, and I am proud of the team for their professionalism, accountability, and compassion as they dealt with very high stress, their own personal safety, and a new, even more complex and dangerous environment for youth. Through all of this, we have learned how powerful we really are and I am very excited and hopeful for what we can do together for the young people experiencing crisis in our city.

All of this work couldn't have been done without the support of our partners, our funders, our volunteers, our donors, and our government services.

Thank you for everything.

Margo Long *President & CEO | Youth Empowerment and Support Services*

LETTER FROM THE BOARD CHAIR

On behalf of the YESS Board of Directors, I would like to thank our incredible community of staff, donors, volunteers, and partners who are all part of walking beside youth on their journeys towards healing and appropriate community integration.

In this past year YESS has continued to foster a culture of collaboration with fellow youth-serving and homelessness agencies in Edmonton. It has been so powerful to see YESS take part as a voice of leadership in the sector of youth trauma and homelessness in the city, the province, and on a national level. On the front lines of this work, YESS staff continue to provide shelter, deliver programs, and build relationships with youth, empowering them to create positive change in their lives.



Our community continues to be an incredible partner in supporting YESS' mission and work with youth in our city, and we hope you will continue to walk with us to create spaces where we can heal together.

Robert Blackwell *Chair, YESS Board of Directors*

YESS: YOUTH EMPOWERMENT & SUPPORT SERVICES

WHAT WE DO

Based in Edmonton, Youth Empowerment and Support Services (YESS) provides immediate and low-barrier overnight and day shelter, temporary supportive housing, and individualized wrap-around supports for young people aged 15–24.

We work collaboratively within a network of care focused on the prevention of youth homelessness by providing youth with the necessary supports to stabilize their housing, improve their wellbeing, build life skills, connect with community, and avoid re-entry into homelessness.

THE CYCLE OF UNADDRESSED TRAUMA

Experiences such as addiction, mental illness, violence, victimization, criminal involvement, and more can create a trauma response that is difficult for youth to overcome and heal from. Developmentally, youth do not have the cognitive or emotional skills to process these experiences and are often frozen in survival mode. These responses can create barriers to positive community involvement and integration. Families, employment, relationships, and education can all be affected by their responses to trauma, which builds up more intense responses to more intense trauma experiences. At YESS we can help youth identify positive goals and provide them with immediate resources and supports to interrupt their trauma responses and build new, healthier life skills.

YOUTH HOMELESSNESS PREVENTION

Prevention refers to policies, practices, and interventions that either (1) reduce the likelihood that a young person will experience homelessness, or (2) provide youth experiencing homelessness with the necessary supports to stabilize their housing, improve their wellbeing, connect with community, and avoid re-entry into homelessness.

OUR PROGRAMS

691 Total clients served in 2019/2020

Supportive Housing

Youth Empowerment and Support Services (YESS) provides two supportive housing facilities: Graham's Place and Shanoa's Place. For youth who need the stability and support of a longer-term placement than our shelter, our two residences provide a homelike environment while youth work on their goals. Youth in our supportive houses are taught to identify realistic and individualized goals that help them move forward in their journeys towards healing and independence. Our purpose is to walk beside the youth in a more stable environment to help facilitate safe and appropriate community integration.

129 Ages 15–17 (19%)

329 Ages 18–21 (48%)

183 Ages 22–24 (26%)

100% Clients who have experienced trauma

165 Clients w/Childrens Services involvement (24%)

526 Clients w/o Childrens Services involvement (76%)

Armoury Resource Centre (ARC)

The Armoury Resource Centre (ARC) is home to a variety of daytime programs, including medical care, addictions and mental health counselling, help with continuing education and employment, art therapy and programming, recreational activities, life skills and employment readiness, and help with housing resources. ARC provide youth with basic needs and shelter from the elements with the support of non-judgemental staff in a safe place to hang out without the fear of loitering or trespassing charges. At ARC, our youth have a safe place to come where they can build, on their own terms, relationships with our staff. Our staff focus is on establishing trust with our youth so that they will see themselves as worthy of care and compassion, building positive relationships with staff that encourage growth and self-confidence.

264 Female (38%)

415 Male (60%)

12 Non-Binary (1.7%)

Nexus Overnight Shelter

Our 24-bed overnight shelter, Nexus, gives youth a safe, secure, and immediate place to stay when experiencing homelessness. The shelter opens at 9PM every night and provides beds for sleeping, basic needs like food, clothing, showers and laundry, school supplies, and packed lunches for youth attending school. This is a safe place for all youth with support and access to staff who are trained to deal with diverse client needs. We are LGBTQ2S+ friendly. We have harm reduction minded staff, with suicidal ideation intervention and safety planning. Youth who stay in shelter will also receive justice support from staff. Our organization works closely with EPS beat officers to understand charges and pathways. Our staff also work with youth to review judicial documents and assist with reminders for appointments and court dates. Staff work to build community support connections before youth leave program to ensure supports exist beyond their time at YESS.

223 First Nations (32%)

107 Métis (15%)

8 Inuit (1.2%)

OUR NUMBERS

NEXUS OVERNIGHT SHELTER

15-21
yrs old



24 Youth Capacity



Amenities:



- Trauma informed supports for anxiety, mental health issues, addiction issues and sleep issues
- Resource support to continue momentum on daytime goal planning
- Relationship building to help build trust



3
Staff at once



SAFETY & STABILITY
Providing a safe space for youth experiencing addiction or mental health trauma

ARMOURY RESOURCE CENTRE

15-24
yrs old



50-60 youth capacity



Amenities:



Daytime Resource Support

- Working to help build relationships with on-site services for smoother community integration
- Access to in-house resources and external community referrals for life skill development
- Low-barrier access to services to build capacity for employment, education, trauma support, spiritual needs, and medical support

3
Staff at once



HEALING & INTEGRATION
Goal setting, resource work, relationship building

SUPPORTIVE HOUSING

15-21
yrs old



14 Youth capacity -
7 at each location



Amenities:



Transition Work

- Building up relationships and trust with community resources and supports
- Family and natural support work
- Focused goal setting to help develop life skills

1-2
Staff at once



EXIT TO COMMUNITY
Transition, resiliency, belonging

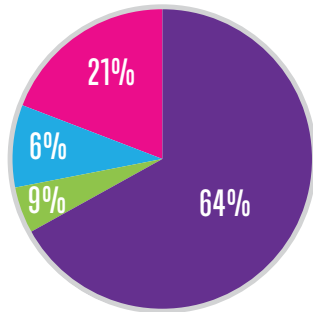
STATEMENT OF OPERATIONS

For the year ending March 31, 2020, with comparative figures for 2018/2019

	2019/2020	2018/2019
REVENUE		
Unrestricted Revenue:		
Children's Services – Edmonton Region	\$ 984,853	\$ 1,008,668
Donations	2,537,355	1,514,472
Special Fundraising Events (net)	606,826	389,189
Loss on disposal of tangible capital assets	3,457	(103)
Investment Income	(60,593)	(5,291)
Other revenues	47,556	67,972
United Way	296,262	266,829
Total Unrestricted Revenue:	4,415,716	3,241,736
Restricted Revenue:		
Casino and raffle	71,247	73,649
Donations	324,617	477,378
Government Grants	457,217	20,087
City of Edmonton	99,525	75,000
Amortization of deferred capital contributions	130,727	134,982
Total Restricted Revenue:	1,083,333	781,096
Total Revenue:	5,499,049	4,022,832
EXPENSES		
Wages and benefits	3,611,881	3,448,306
Direct client	223,509	106,626
Facility	295,220	245,705
Administrative	550,437	616,104
Fundraising	55,973	89,631
Amortization	239,963	227,184
Total Expenses:	4,976,983	4,733,556
Excess of (expenses) revenue for the year	\$ 522,066	\$ (710,724)

Please visit yess.org/our-impact to read our audited financial statements.

FUNDING



FISCAL 2020

\$ 3,661,192

FUNDRAISING

296,262

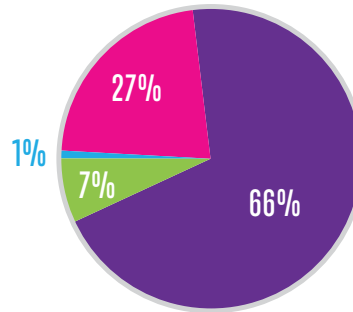
UNITS WAY

\$ 481,742

GOVT. OTHER

\$ 1,059,853

GOVT. CONTRACT



FISCAL 2019

\$ 2,652,248

FUNDRAISING

266,829

UNITS WAY

\$20,087

GOVT. OTHER

\$1,008,668

GOVT. CONTRACT

*Fundraising includes donations, internal/external events, and grants.

YESS is generously supported by:



EXPENSES

It currently costs just over \$7,000 to serve one youth at YESS for one year, compared to the over \$100,000/year (EndPovertyEdmonton 2015) it costs to serve one entrenched and addicted homeless adult. Preventing youth homelessness is both a prudent investment and the right approach to ending the cycle of homelessness.

	FISCAL 2020	FISCAL 2019
AVERAGE COST PER YOUTH*	\$7,203/year	\$6,493/year
FUNDRAISING COSTS	\$55,973	\$89,631
ADMINISTRATIVE COSTS	\$550,437	\$616,104
STAFFING**	\$3,611,881	\$3,448,306

2019/2020 – 691 individual clients served; 2018/2019 – 729

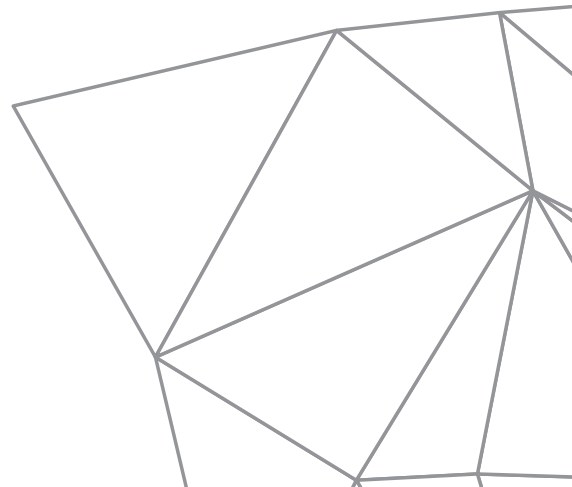
OPERATING BUDGET

2019/2020

\$4.5 Million

2018/2019

\$4.5 Million



YESS SUPPORTERS

Thanks to our amazing donors, we're able to provide programs and resources for youth and walk beside them on their journeys towards healing and appropriate community integration. We would like to give a special thanks to the following donors for being some of our greatest supporters this past year.

\$10,000 and up

1315015 Alberta Ltd.
o/a Dominion Lending Centres Mortgage Mentors
41 Service Battalion
5 Days for the Homeless
Rick and Kathryn Adelsberger
Alberta Blue Cross
Hearts of Blue
Alberta Browncoats Society
Alberta Health Services
Alberta Milk
Allard Foundation Ltd.
Carol Allen
Alta-Fab Structures Ltd
Al-Terra Engineering
Amalgamated Mining & Tunnelling Inc.
Christopher Ambrozic Apple Inc.
Appleyard Foundation
Aquaduct Foundation
AR-EL Electrical Systems Ltd.
Richard W. and Shannon M. Arndt
ATB Financial
ATCO EPIC
Owen Atkins
Robert Babeec
Steven Bell and Culley Schweger Bell
John R. and Karen Belmont
R. Paul and Gisele Belzil
Kenneth and Sharon Berg
Bev Facey Community High School
BioWare ULC
Robert Blackwell
Cameron and Lisa Blair
Blush Lane Organic Produce Ltd.
Boston Pizza Northern Alberta
Leo Brady
Linda Breitkreitz
Jack Brown
Beverley Browne
Donna Burnside
Dave and Gwen Burroughs
Heidi and Antoine Bussiere
Effing Seafoods
Butler Family Foundation
Karin Butt
Joe Cairo
Donald Cameron
Canadian National Railway (CN)
Canadian Western Bank
Murray and Margaret Cann
Canterra Developments Corp.
CapServCo Limited Partnership
Carlson Construction
Don and Mary Carson

Shelly Chamaschuk
Chapel of St. Luke & St. John
Jason Chartrand
Patricia Cheung
Chritenson Equities Ltd.
Rene and Lisa Cloutier
Collin Bruce Mortgage Team
Collins Steel
Community of Christ
Con-Spec Industries Ltd.
Tracy Cook
Shannon and Jeff Cory
Cosmopolitan
International Club of Edmonton
Costco - Edmonton #258 (South)
Crystal Glass Canada Ltd.
Bert DeBruin
Dentons Canada LLP / S.E.N.C.R.L.
Dominion Lending Centre Mortgage
Dow Chemical
Tim Drader
Alan and Jane du Heaume
Darren & Laurel Durstling
DynaLIFE Dx
Eberlein Family Charitable Foundation
Wendy Edey
Edmonton & Area Child and Family Services Region 6
Edmonton Catholic Schools
Edmonton City Centre Church Corporation O/A E4C
Edmonton Community Foundation
Edmonton Lodge #11 of the Benevolent and Protective Order of Elks
Edmonton Lodge #22 Royal Purple Association
Edmonton Lodge #30 IOOF
Edmonton Millwoods Breakfast Lions Club
Edmonton Oilers Community Foundation
Edmonton International Airport
Effing Seafoods
Electronic Arts Outreach EPCOR
Estate of Angela Lo
Estate of Muriel Eva Holo
Estate of Ronald Glen McKenzie
Peter & Cathy Faiazza
Kent Fargery
Thomas Fath
First Christian Reformed Church
Fogolar Furlan Edmonton
Dave and Nancy Foreman

Foster Park Brokers Inc.
Fraternal Order Of Eagles
Robert Gauthier
Geroll Management Inc.
Gibson Energy
Gail and N. Barry Giffen
Shirley Gifford
Gilead Alberta ULC
Government of Alberta
Government of Alberta Culture, Multiculturalism and Status of Women
Grace United Church
Kim and Coleen Graham
Edward Graham
Keith and Laura Graham
Grasshopper Landscaping Ltd
Thomas and Lisa Gryba
Gryphon Benefits & Insurance
Nancy Gutteridge
Margaret Halford
Donna Hammerlindl
Davidand Catherine Harbinson
Ian Hardman
Kerry and Sue Hartly
Brian and Bernita Hayden
Gordon and Louise Height
Holos Productivity Inc.
Holy Family Columbus Club
Homeward Trust Edmonton
James Hutton
IBM Employees' Charitable Fund
Impark
Inclusion Alberta Foundation
Ingleswood Christian Reformed Church
Insight Insurance and Risk Management Ltd.
Inter Pipeline Ltd.
Ivanhoe Cambridge Inc. - Southgate Centre
Sarah Chan and Don Iveson
Robert and Margaret Iveson
James Sinclair Management Ltd.
John Brooks Company Limited
Janet Johnstone
Brian and Elizabeth Jolly
Mathias Jonsson
Robert Kibbins
Kin Club of Fort Edmonton
Kiwanis Club of Edmonton Capital
Kenneth King
R. Elinoir Klapstein
Sandy Koe
Remkes Kooistra
Korea Veterans Association of Edmonton Unit 21
KPMG LLP

la maison Simons
Lacie Foundation
Martha Laverty
Ledcor Group of Companies
Joan Lidkea
A. Eugenia Lipinski
Local No. 37 of the Edmonton Public Teachers' Association
Stephen and Catherine Madsen
Martin Deerline
MC College Group Inc.
Sharon McCall
McCoy Global
Mealshare Aid Foundation
The Melton Foundation
Joanna Miazza
Samuel Mikes
Mill Woods Presbyterian Church
Elizabeth Miller
MLC Group Inc.
Peter and Katherine Morrison
Javaid and Henrietta Naavi
National Money Mart
Neerlandia Christian Reformed Church
Lise Nicholson
Nordic Mechanical Services Ltd.
Order of Ahepa Aurora Borealis Chapter No C/10
Eileen and Stan Papulkas
Gordon and Heather Pasini
Pattison Outdoor Signage
Fred Patton
Petrin Mechanical Ltd.
Patrick Priestner
Priority Mechanical Ltd
REALTORS' Community Foundation
Karen Reed
Gerd Resch
Right Choice Camps & Catering
Mary Robbins
Rock Hill Contracting Ltd.
Rogers Communications Canada Inc.
Douglas and Kathryn Rongve
Cathy Roozen
RSM US Foundation
Running Room Canada Inc.
Mark Salomons
Judith Sangster
Servus Credit Union
Leonard and Heather Shankowsky
Shaw Communications Inc
Chris and Dale Sheard
Sherwood Park Royal Purple Charity Society
Showtime Promotions

Simons (West Edmonton Mall)
Robert and Carol Snyder
Marilyn and Stan Solikoski
William Somerville
Sonic 102.9
St. David's Anglican Church
St. Francis Food Bank Association
St. Paul's Foundation
Robert and Elizabeth Stangeland
Stantec
Myroslaw Szulhan
TD Accounts Payable Centre
TELUS Communications Inc.
TELUS Corporation
Norman Temple
Robert Teskey
The City of Edmonton
The Dinner Optimist Club of Edmonton
The Green Depot Fort McMurray Inc.
The Harry and Betty Billingsley Charitable Foundation
The Home Depot Canada Foundation
The Masonic Foundation of Alberta
The Muttart Foundation
The Organic Box Ltd.
The Orthodox Fellowship Club of Edmonton
The Sawatzky Specialties Foundation
The Shawana Foundation
The Stollery Charitable Foundation
Stephen and Marian Thompson
Susan Thomson
Torskeklubben of Edmonton
Uber Canada
United Way 52 Benevolent Society
United Way of Calgary and Area
United Way of Greater Toronto
United Way of the Alberta Capital Region
Urban Planet
James Vansevenandt
Marilyn R. and Donald M. Walton
Rachel Ward-Flanagan
Wawanesa Insurance
Mike and Jane Webb
Douglas Weir
White Knight Construction Ltd.
William & Florence Lede Family Foundation
Crystal and Blair Willie
Robert A. and Carol Wilson

Kathryn and Gerald Wittenberg
Albert Wolthuis
WP Wagner (School of Science and Technology)
Norm Wuetherick
Emma Zhang

\$5,000-\$9,999

ACT/UCT Edmonton South 1017
Aquarian Renovations Inc.
Archbishop Jordan Catholic High School
Argus Machine Co. Ltd.
Richard Asselin
Allison Baker
Darren Baptista
Simone Baril
Cameron Barr
Alan and Jantien Beacham
Beaumont Columbus Alberta Association
Kathleen Beck
Michael Beechinor
Stephen and Jessie Bemount
Wendy-Anne Berkenbosch
Bethel Lutheran Church
Robert Betty
Beulah Alliance Church
BGE Indoor Air Quality Solutions Ltd.
Kathleen Blake
Morley and Valerie J. Blanch
Sharon Blunt
Herman and Pieta Borkent
Michael Brisseau
Emily Brodeur
Bryan & Company LLP
Burke Group
Caesarstone Canada Inc.
Caerose Council
Catholic Women's League
Capilano Glass 2000 Ltd.
Catholic Parish of St. John the Evangelist
Chalmers-Castle Downs United Church
CI Investments Inc.
CN Employees' and Pensioners Community Fund
Penelope Coble
Rod and Lynn Connop
Roger and Grace Cretain
Cybertech Automation Inc.
Maya and Jonathan Davidow
Louise Davis
Wendy Dawson
Katie DeBoer
Sharon and Andre DeSoete
Devon United Church
UCW

Joseph Doucet
Simone Doucette
Judith Dyck
Dyna - Flo Social Club
Economic Insurance Group
Edmonton Catholic Teachers Local 54
Edmonton Food Bank
Edmonton More Than Opera Society
Edmonton North District Area Council 2
Edmonton Strathcona Lions Club
Stan and Marian Eelhart
Candace Enns
Steven Ewaskiw
EZ Foods & Services Ltd.
Noella Fagnan
Fidelity Investments Canada Ltd.
Harvey Ford
Colleen and Darren Frank
Franklin Templeton Investments
Elsa-Marie Frazer
Grace French
J.R. Frey
Robert Fritch
Garriity & Baker Drilling Inc.
Don and Elaine Geake
Diane and Glen Gibbs
Serge and Colleen Gilbert
Glengarry Community League
Tony Gnanasiamany
Katherine Goble
Good News Moravian Church
Gwen Gray
Great North Wellhead & Frac
Elaine Greenwood
Doug and Susan Gregory
Janet Greidanus
J. Richard Grynoch
Janice Guidinger
Habberjam Mechanical Inc
Clarice Hansen
Jan Hardstaff
Timothy Hartnagel
Harty Investment Group
Irene Henderson
Jeff and Cori Henkelman
Leola Hillaby
Barbara Hinz
Vivian Hotvedt
Donald Howden
Daniel and Laura Hryciuk
Michael Hudec
George Huybregts
Imperial Oil Strathcona Refinery
Incite
Intact Insurance
IODE - Cooking Lake Chapter

Clare and Thomasine Irwin
ISL Engineering and Land Services
Padmini Jandhyala
David and Colleen Jude
Philip Karpluk
S. Jack and Evanthia Keaschuk
Arthur and Burtine Kendall
Kinette Club of Edmonton
Lorne and Elizabeth Kish
Marvin and Elizabeth Kossowan
Jochen Kuttler
Rowena LaFleche
Landmark Group of Companies Inc.
Le Club La Verendrye
Norman and Betty-Ann Leaf
Daniel and Jennifer LeBlanc
Ledcor Projects Inc.
Robert and Glorann Lee
Rene Lincoln
Carmen Lomow
Robert Luth
Mac's Convenience Stores
Lucille and Aime Magnan
Sheldon and Tami Magnes
Kevin Mah
Marsha Manolescu
Gerard Masse
Patricia McFetridge
Brian McLennan
Muriel McMurdo
Medical Imaging Consultants
Medical Students' Association
Catherine Melnychuk
Millwoods Community Church
Millwoods United Church
Geneva Moore
Kevin Motkosky
Betty-Lou Munro
Glenn Murphy
Paul Murray
NAIT
Rajendra and Zenia Narang
Tanya and Mario Narzt
David Nash
Jan and Jana Nigrin
Norpoint Sandblasting and Painting
Kirby O'Connor
Orion Environmental Services Ltd.
Our Lady of Fatima Association
Norma Page
Allan Pankratz
Darcy and Rosalynn Parasynchuk



Paul Byrne Professional Corporation
Stefanie and Joel Pepin
Marcel Petrin
Donald Pirie
Stephen Prendiville
PT Business Services Ltd.
John M. and Linda Raposo
Read Jones
Christofferson Ltd.
Keith Reade
Donald and Gladys Reimer
Theodore and Rita Rempel
Janice and Bruce Rennie
Gordon Reykald
Elizabeth Richards
Daryl Rivest
Carolynne Ross
Rotary Club of Edmonton Southeast
Allan Rowswell
Ryan Kurlyo Fine Artist
JoAnn Sabo
Merwan Saher
Joan Sametz
Seagate Contract Management Ltd.
Orest Semchishen
Tak Shimizu
Anita Sielecki
Brune and James Rick Sinneave
Michael Skarupa
Valerie and Morten Sorensen
St. Albert Public School District No. 5565
St. Albert United Church Women
St. Andrew's United Church Quilting Group
St. John's Anglican Church
St. Joseph Charities Society
St. Matthias Anglican Church
St. Thomas Aquinas High School
Starlite Room Ltd.
Darryl Stewart
Stoik Investments Inc.
Strathcona Baptist Church
Strathearn United Church
Suncoer Energy Inc
SureHire
Synergy Projects Ltd
Patricia Teha
The Alberta Knights of Columbus Charitable Foundation
The Green Bottle Depot Windermere Ltd.
The Tenaquil Foundation
The Unitarian Church of Edmonton
The Violet Chocolate Company Ltd.
Linda Thiessen
University of Alberta Rotaract Club
Donald Verbeke
Jeff Walter
Lee Waterman
WCB Workers' Compensation Board
Adrian Whittaker
Mark and Marla Wiens
Susan Wigeland
Randall and Carol Williams
Robert Willis
Women in Mission
Lois and Terry Wood
Gwen Woodman
John and Jill Woodman

Woodvale Community League
Workers' Compensation Board Staff
Donna Wright
Yardstick Software Inc.
Jean Young
Catherine Ziegler
Zion Baptist Community Church

\$2,500-\$4,999

1308051 Alberta Ltd.
O/A The Empress Ale House
Sarah Abraham
Thomas and Pamela Acheson
Allison Akgungor
Alberta Beer Festivals Inc
Alberta Blue Cross
Randy and Catherine Allaire
Pamela Allan
Cheryl Anderson
Robert Angeli
Anglican Church of The Good Shepherd ACW
Annunciation Catholic Women's League
Richard and Maureen Arnold
ATB Financial
Avalon Junior High School
Mavis Averill
Aviva Insurance Company of Canada
Douglas Baines
Colleen Balding
Lucy Bamforth
Trisha Bauman
William Bell
Kathy Bellamy
Aaron Berg
Valerie Berger
Robert Bhatia
Blue Jayne Enterprises
John Bodnar
Robert and MaryAnn Boehm
Daniel Bokenfohr
Kevin Borch
Val Brandt
Steve Brechtel
Rina Brideau-Thombs
Georgette Brodeur
Hugh and Loretta Brown
Carol Brown
John Bubel
Vittorio and Barb Calaresu
Karonne Caldwell
Mary Cameron
Capital Power
Evelyn Carson
Phil Carter
Cenovus Energy
Joann Chabaylo
Brent Christopherson
City of Edmonton - Office of the Mayor
James and Patricia Coe
J. Hebert and Joyce R. Cook
Coronado United Church Women
Michael and Christine Costanzo
Yvonne Cowan
Cameron Cragg
James and Vicki Crowell
Jan Curtis
Heidi and Edward Czarnietzki
Barbara Deneka
Colleen Densmore
Details Insulation Ltd.
Joe and Lorrie Deutscher
Janet Dixon

Daniel and Margaret Donnelly
Alison Dowling
James Downing
Martha Dosey
Karen Doyle
Gerald and Carol Draganiuk
Dutch Delicious
Earl Buxton School
Edmonton Economic Development Corporation
Edmonton West Zone Soccer Association
Burkhard Eibich
Christine Elbrink
W. Jacqueline and Martin C. Elton
Encore Trucking & Transport Ltd.
Enviro Trace Ltd.
Kimberly Epp
Rochelle Epp
Michael Ewert
Express Employment Professionals
Cathy and Steve Faulkner
Bryan and Olga Ferguson
Lois Field
Michael Fiorino
Kathy Fitzgerald
Patricia Fleming
Douglas French
P. Cameron Friesen
Cindy Fung
Andrew Gagnon
Graham Gardiner
Mary Garnier
Helen Garwasluk
Sarah Gericke
Beverly Gingras
Patricia Glasser
Glendale Ventures Ltd.
Goldmark Diesel International Ltd.
Grown Bovan & Associates Limited
Charles and Sheila Grant
Stephanie Gregorowich
Rex Groeneveld
Jeff Gusdal
Shirley Hackwell
Carol Haley
Harry and Carolyn Hanly
Beatrice Harke
Barbara Hartmann
Z'Anne Harvey-Jansen
Faye Hatch
Debra Hathaway
Allan and Judith Hayman
Michelle Height
Margret Hein
Leslie Helmers
Kerry and Michelle Hetu
Hillcrest School
Lois Hingley
Geoffrey and Brenda Ho
Gerry and Carole Hogeworst
David and M.J. Home
Norma Hopkins
Hosanna Lutheran Church
Jack and Sharron Hostland
Taryn Hunchak
I.C.E. Signs Inc.
Richard Innes
Richard and Barb Iwanuk
Jan Jackson
Rita Jager
Neeltje Janse
Bradley Jansen
Allyson Jeffs
Peter Jenkins
Jillian Builders Inc.

Jared and Jennafer Johannesen
John H. & Marie Koziak
Family Foundation
Rosemary Johnston
David and Sharon Jones
Corinne Jones
Kyle Kasawski
Catherine Keill
William Kelly
Janice Kent
Scott and Lorie Key
Thomas and Dianne Kieren
Marion Kilgour
Amanda Kim
Ellen and Monroe Kinloch
Rita Kinsman
Theresa Knash-Gulka
Barbara Krahn
Barbara Kruger
L7 Architecture Inc.
Donna Marie Laderoute
Cody Lakevold
Gordon Lambe
Michael Langstone
Lansdowne School
Ingrid Larsen
Brian and Cheryl L. Latte
Marcel and Louise Lavallee
Steven Lavery
Anne Le Rougetel
Mary Learning
Veronica Lednicky
William Lee
Leftover Company
LeGrand Northwest Occulrlists (2013) Inc.
Morris and Beverly Lemire
Marie-Claude Levert
Shannon Loehr
Lois Lucas
M.E. Lazerte Composite High School
Frieda Maaskant
Brad and Kathy Magor
Ana Manderson
Adele Mandryk
Richard Maranchuk
Michael Marks
Laura Martin
Mather Charitable Trust
Kathleen McCabe
Gweneth McCracken
Ross McCrady
Cory McDonell
Alex McEachern
Margaret McEachern
Jack and Eleanor McMahon
Sandra and Ian McRobbie
Anton Melnyk
Carolynne Melnyk
Teresa Melton
Devidas Menon
Jenny Mernickle
Deanna Messner
Maxine Mikkelsen
Randy and Jennifer Mikula
Miles Consulting Group Ltd.
Jonathan Mitchell
Russell Monck
Hugh Montemurro
David and Gail Moores
Bryan Morledge
Randy and Darlene Mosiuk
Doreen Mueller
NAIT Food Services
R. Gwendy Neher
Rob Nespliak
Herman and Lola Neufeld

Tim and Christine Newbury
Valerie Nichols
Carolyn and Kenneth Nielsen
Nisku Industrial Coatings Ltd.
Thomas O'Flynn
Gerald and Joan Oldegbers
Esther Ondrack
Megan Ono
Barbara Osterhout
P.E.O Sisterhood Chapter H
Cathy Page
Della and Jason Paradis
Parkview School
M. Ruth Patrick
Pepsico Foundation
Justin Pertman
Jessica and Craig Pinder
Polish Canadian Humanitarian Society
Kimberly Precht
Preferred Client Services Group Ltd.
Primo Skate & Snow Inc.
Michel Proulx
Pure Class Dance Arts Association
Carolyn Alma (Elaine) Quinn
Juanette E. and Jerrid A. Quintal
Michelle A. Radostits
Michele Rajotte
Stanley and Lenore Rampling
Marc and Theresa Ratte
Terry and Elisa Rawe
Elizabeth Reekie
Gerald Reid
Simon and Rita Rivest
Charles Roberts
Mark and Judy Robinson
Willard and Bibiane Rotbaille
Rock & OM Yoga Fitness Inc.
O/A Rock Jungle Fitness
Romanian Orthodox Church of Edmonton
Ryan Romanko
Ron Hodgson Chevrolet
Buick GMC Ltd.
Joan Rossall
Rotary Club of Edmonton Whyte Avenue
Rotary District 5370 Charitable Foundation
Michele Royal
Don and Sharon Rubulak
Marie and Russell Rudkowski
Ena Rudovics
Connie and Barry Runnalls
Craig Ryan
Marshall and Lisa Sady
Salisbury Composite High School
George Samoil
Keith Saunders
Thomas Saunders
Aileen Mary Savage
Marinus Scheffer
John and Martha Schiel
Sara Schiff
Charles and Marilyn Schroder
Fredrick Schulte
Shirley Scott
Margaret Sebzda
Tim Senger
Shelley and Guy Scott Family Foundation
Colleen Shepherd
Jeff and Betty Short
Allen Shostak

Dave Siever
Sol and Shirley Sigurdson
Terry and Jackie Simmonds
Simons Londonderry Mall
K. Gayle Simonson
Paula Siwik
Myrna Slobodan
Anna Smallwood
Nigel Smart
Murray Smart
Greg Smith
South Cooking Lake Ladies Friendship Group
Kathy Spachynski
St. Edmunds Catholic Women's League
St. Paul's United Church
St. Paul's United Church Women
Herman and Mariette Stad
Mary Starchuk
Brice and Lorna Stephenson
Donna Stewart
Frank and Riek Stolk
Joyce Strobl
Donna Suchan
Jason Summach
Charles Swinarski
Synergy Group of Companies
Kenneth and Beth Taber
Maurice and Marna Taylor
TELUS
The South Alberta Light Horse Regiment Foundation
William Thomson
Patrick and Maureen Tighe
Deanne Timmons
Douglas and Deborah Titosky
Patricia Toogood
Donna Trenholm
Trinity Evangelical Lutheran Church
Garry and Sharon Trotter
United Way/Centraire East Ontario
Esther Van Herk
Peter van Stolk
Henry Van Weelden
Vanta Group
Audrey Vetsch
Julia Vos
Lilian Wagner
Waiward Industrial LP
Kiersten Walker
Iain Watson
Kathy Watson
Julian Wenger
Brigitte Werner
Dianne Westwood
Craig Whalen
Justin Wheler
Rena Whistance-Smith
Nancy White
Vonnice Whiting
Ronald and Beatrice Wicks
Madelaine Williams
Rochelle Wilson
John Wilson
Paul and Cecilia Winton
John Wodak
Gary Wolch
Jeff Wright
Karen Wronko
Keith Wylie
Giselle Yanish
JoAnn Young
Morgan Youngman
Joanne and Doug Zbetnoff

Edward Zubak
\$1,000-\$2,499
1760570 Alberta Ltd. Glo Skin & MedSpa
1862508 Alberta Ltd.
O/A Winterburn Bottle Depot
Stephen Aaron
Robert Abbott
Abundant Life Ministries of Edmonton
Academy Dental
Advantage Assist Group
AG Grant Development
Alberta Agriculture & Forestry
Alberta Environment and Parks
Alberta Oil Tool
Alberta School Employee Benefit Fund
Alberta Teachers' Association
Alfa Laval
Allwest Furnishings Ltd.
Steve Andersen
Miranda Anderson
Karen Anderson
Susan and Terry Anderson
Arctic Chiller Ltd.
Rita Arends
Catherine Armstrong
Doreen Arnoldussen
Assiff Law Office
Loreen Austin
Dianne Baier
Ruth Ball
Melhi Bandravala
Bantrel
Deborah Barrett
Keith Barry
Roger and Anne Bates
Venetia Baudin
Gregg Beaver
Susanna and Stephen Belter
Azieb Berhane
Ryan Berry
Alan Beseker
Bruce Bevan
Janine Bigelow
Rosemarie Biggs
Vivian Binenna
Chad Birkebeck
Stan Bissell
John Bland
Michael and Bonnie Bock
Bruce and Christine Bococek
R. Terrence and Kathleen Bococek
Faye Boer
Pauline Boisvert
Grace Bokenfohr
Brian and Lois Bonik
John Booth
James Boss
Carolyn Bougher
Steve Bowler
Lesia Boychuk
Debbie Boyko
Charlotte Bragg
Brandon Petroleum Sales Ltd.
Jeanne and Walter Brauer
Brian Farrell Professional Corporation
David Bridges
William Bristow
Diane Brown
Susan Browning
Sheila Buckle
Ephigione Bullis
Cherri Burdeyney
Valerie Burke
Adolf and Kathleen Buse

Phil Cameron
Donna Campbell
CanadaHelps
David and Karen Capelazo
Cardiology Academic Trust Fund
John C. and Marilyn A. Carr
Robert and Irene Carter
Marilyn Caskey
Chris Cassin
Catholic Parish of Assumption
Certas Home and Auto Insurance Company
Violet M. and Gwen Chamaschuk
Terry and Beverley Champion
Denise Chang-Yen
Kenneth Charlebois
Maureen Chauvet
Karen Chisholm Bale
Brenda Chmilar
Glenn Cholak
Greg Christenson
City of Edmonton Councillors' Office
Freda Clemens
Margaret Coates & William Thomson
David and Bonnie Cochrane
Gerald Coen
College of Licensed Practical Nurses of Alberta
Joseph and Marta Collier
Peter Collier
CompuVision
Karen Cook
Germaine Cook
James and Karen Cooper
Costco Wholesale #156 - Edmonton Northeast
Cougar Paint & Collision Inc.
Brad Crossland
James and Vicki Crowell
Norman and Marilyn Crux
CSA Group
Gordon and Karen Cumming
Florence Cunningham
Ronald and Wendy Curry
Colleen Cust
Margaret and Dik Cusveller
D.S. MacKenzie School
Barbara and Gurston Dacks
Dianne Dale
Sharon Damery
Kenneth and Cheryl Danchuk
Darma Realty Services
Bernie and Leona Dauvin
Debra Day
Jessica Day
Joseph and Barbara de Kock
Mary Dean
Karyn Decore
Decore Holdings Inc.
Cheryl Demorest
Dan DeNeve
Brea Desaulniers
Shirley Devlin
Pavandeep Dhuga
Rowena Dixon
Betty-Lou Dobie
Rosemarie Doblter
Carol Donald
Marion Donald
Alan and Catherine Donnelly
Louise Dornier
Allison Dorman
Judy-Lynn Downey

Eugenie and Claude Dube
Robert and Theresa Dunster
Margo Dunworth-Scott
John Duxbury
E Hastings Professional Corporation
E. Mirth Professional Corporation
Vicki Easthom
Shirley Edgar
Angela Edgington
Edmonton 2001 Charitable Society
Edmonton Construction Association (ECA)
Edmonton Folk Music Festival
Edmonton Needlecraft Guild
Edmonton Salvation Army Food Bank
Edmonton South Side Primary Care Network
Lawrence and Sylvia Eewanchuk
Stephen Eidick
Eliessie Rugby Park
Andrew Ellis
James E. and Romana M. Ellis
Emmanuel Community Reformed Church
Lisa Everitt
Keith Farquharson
Farrell Engineering Sales Inc.
Gail Faulkner
Wendy Ferguson
Marisa Ferrari
Douglas Ferrier
Field Law
Jane Filipow
Beatrice Findlay
Nicole Finseth
First Presbyterian Church
Harry and Velma Forest
John and Elizabeth Forlyfow
Margaret Forman
Robert and Sylvia Forrow
Janice Foster-Cole
Foundry Conferences & Events
Tracy Fowell
Brian Fowler
Phyllis Fowler
Tom and Elaine Fowler
Richard and Catherine Fraser
Paul and Corinne Fraughton
Ralph Friedrichsen
Rhoda Friedman
Rhonda Friskie
Jo-Anne Frost
Dianne Fuson
Gaetz Realty Inc.
Helen Gamrat
Marianne Garley
H. and Barbara Gartner
Elaine Geddes
Vernon Gee
James Neil and Twyla Gibson
Roberta and Robert Giffin
Tucker Gilbert
Stella Gillespie
Susan Gillespie-Lusk
Bradley Gingerich
Randy and Jane Girard
Glenrose Rehabilitation Hospital
Sandra Godel
Good Shepherd Catholic Elementary School
Good Shepherd Catholic Women's League
Patrick and Claire Gooley

Gordon Food Service
Christopher Goss
Frances and Kenneth Gossell
Edward Gots
Aaron Granley
Dana and Holly Gray
Michael Greaney
Greek Canadian Ladies Philoptochos Society
Christine Greene
C. Joan Greene
Greenview Parents Advisory Council
GRETA bar
Trudy Grienauser
April Grindheim
Lene Groenewegen
Gertraude Gross
Sondi Gross
Mildred C. and Gerald Grover
Richard and Teresa Grynas
Margaret Haag
Reba Hackwell
Lisa Hall
Philip and Virginia Halloran
Edward and Madeleine Harding
Terrence and Anne Harrison
Ayden Hartly
Frances Haugen
Jennifer Hawkins
Tammy Hay
Kevin and Rose Hearn
Louise Hebert
Arlene Heitzman
Garrett Hemstock
Michael Henry
Cherish Hepas
Heritage Senior Stop-In Centre
Mark Heule
HG Contracting Inc.
Highlevel Diner
Andrew Hingston
Alan and Angela Hingston
Rick and Gail Hipperson
Darlene Hoblak
Irene and George Hodgson
Greg Holben
John and Lucille Hollands
Vera and Colin Holmes
Sarah Holmstrom
Patricia Holt
Holy Spirit Lutheran Church
Holy Trinity Orthodox Church
Maria and William Bruce Hopchin
Hope Lutheran Church
Hope Lutheran Church Women
Neil Horne
Connie Howe
John Hudson
Sherrie Hughes
Karen Hughes
Stuart and Aldis Hunt
Mary Hunter
Michelle Huot
Ruby and Frederick Husband
Tom Hutchinson
Mitchell Hynes
Imperial Oil
Integrity Seminars
David Iskw
Annette Jackson
Renita Jackson
Ernie Jacobson
Mohamed Jamal
Michael James

Barbara Jamieson
Stuart and Marilyn Jansen
Yanick Jean-Proulx
Douglas and Cindy Jeffery
Lloyd and Kathy Jessup
Jobber
Johnny Bright School
Karen Johnson
Dave Johnson
Ian and RoseAnn Johnston
Vicky Makris
Harvey W. and Ann K. Johnston
Eileen and Dan Johnstone
Penny Jones
Brad and oon Jones
Dallas Joy
Jubilee Auditorium Society
Joseph Mann
Zbigniew and Joyce Marcinkowski
Angela Juby
Jason Kaban
Nancy Kasawski
Don and Carol Kashuba
Miyuki Kawasaki
Sheila Keenan
Iona Kennedy
Lorian Kennedy
Helen Keogh
Guy and Cheryl Kerr
Joshua Killeen
James A and Susanne K Kinasewich
Bob and Barbara Kindrachuk
Kinnikinnick Foods Inc.
Greg and Karen Klak
John and Gloria Klinge
Peter and Deborah Klippenstein
Norman and Valerie Kneteman
Steven Knight
John Kolkman
Francis and Charlotte Koppe
Korwin Cromwell Professional Corporation
Marian Kowalchuk
Pat and Ken Kozak
Eric Kozakiewicz
Marie Kramps
Kathleen Krause
Wilma Krisch
Muriel Kuchison
Marie and Clement Laframboise
Penny Lamnek
Leanne and Robert Landry
Ruth B. and Calvin Lange
Peter and Jean Langford-Jones
Barbara Langridge
Karon Langton
Marcel Leblanc
Helen Lees
Tina Lefebvre
Susan Lemieux
Carrie Lentz
Paul Leonard
Janet Lester
Margaret Levitt
Michael Lewchuk
Kyra Lieu
Natalie Lippa
Mary Lister
James and Sandra Lockhart
Mark and Cheryl Loewen
Patricia Long
Margo Long
E. Jeanne Lucky
Luke's & Lucy's Square Dance Club
Patricia Luxford
Linda Lyons
Ann Lyseng

Claire MacDonald
Katherine MacDonald
Mavis MacDonald Quirk
Judy and Stuart MacKay
Raymond and Donna Mackay
Ann MacKay-Drobot
E. Gayford and Edwina MacDill
Richardson Mah
Klaus Maier
Dave and Laura Majeski
Vicky Makris
Lois Maksymuk
Roy and Eileen Malanchen
Douglas and Glynis Maley
Pamela Maloney
Clay Mann
Joseph Mann
Zbigniew and Joyce Marcinkowski
Nancy Maripain
Janet Marowitch
Donna Martyn
Richard Maschler
Brian and Mona Matheson
Matheson Seniors Housing Corporation
Edward and Teresa Matwchuk
Kenneth May
David Mayor
Trevor and Patricia McBride
Daryn and Lorie McBride
Phil McCarthy
Carmen McClung
Ronald and Constance McClung
Gregory McCosham
Jane and Richard McCreery
McDonald's Restaurant
Keith McDonnell
Margaret McInall
Margaret McKague
Kevin and Lyn McKee
McKee School
Margaret McKenzie
McKernan School
Philip McKinnon
Jayne and Craig McKnight
Marcia McLean
Margery McLennan
E. Beryl McManus
Kenneth McMillan
Wayne and Wanda McMillan
Joanne McMillan
Edward Melson
Memorial Composite High School
Scott Mensink
Jeremy Mercer
Gregg and Patricia Meropoulis
Patrick and Elaine Merrick
Metta Yoga Edmonton
Janet Millar
Miller Western Management Ltd.
Joseph Miller
Miller Thomson LLP
Arthur and Betty Millman
Cailin Mills
Jennifer Minsof
Norman and Merilyn Mitchell
Shirley and Bill Mitchell
Raymond Mitchell
Modern Niagara Group Inc.
Krishna and Romesh Mohan

Craig and Heather Montgomerie
Edward Montgomery
Ingrid Montpetit
Moody's Gartner Tax Law LLP
William and Connie Moores
Mary Morgan
Morguard Investments Limited
Joanne Morrison
Patricia Moyer
James and Annie Muir
Tessa and David Mulcair
Alexandra Munn
Jeff Munro
Wanda Musclow
Angela Myers
Sandy Myshak
William Myskiw
Melanie Nakatsui
Narayanni's Restaurant
Leanne Nash
Ripudaman Negi
Patricia Nessler
Harold and Charmaine Neth
Rene and Judy Nicolet
Kirk Nielsen
Brenda and David Niven
Dale Nordin
Northern Lights Decorative Artists
Ellen Ogilvy
Kristen Olson
Alina Olszak
Tim Oncul
Alexandra O'Neill
David and Carey Organ
Arlene Otto
Chris Ouellette
Our Lady of the Angels Catholic Women's League
Overlanders Elementary School
P & L Enterprises
Anne and John Packer
Solange Pahud
Janet Palmer
Pals Geomatics Corporation
Claudia Palylyk
Robert Pangrass
Wayne and Diane Pantzer
Kathleen and Tom Parker
Parkland School Division No.70
Partridge Hill Church Women's Association
Partridge Hill United Church
Ruby Patrick
Patterson Dental
Rolanda Patton
David and Wendy Patton
Mary Pattullo
Paul Kane High School
Linda Payne
John Pearce
PEO Sisterhood AB-SK Chapter T
Kimberley Pereira
Darcy Perreault
Mary Ellen Persson
Delores S. Peters
McKinnon
Douglas Peterson
Margaret Petrin
Jurgent and Helga Pfaff
Netta Philet
Pi Master- Beta Sigma Phi
Raymond and Lenora Pinkoski
Planet Coffee
Marian Z. and Mary Ann Podgorniak

Anna and David Porfion
Maija and Neeraj Prakash
Sharon Prather
Fred Prather
Eric Prenoslo
Diane Presiniuk
Douglas Prime
Helen Primrose
Peter and June Proudfoot
Prudent De Milliano Estate
Qualico Communities
Dorothy Radakovich
Henry and Lorraine Radosh
Sarah Raiss
Len and Cheryl Raiwet
Tober
Claudia Ramsay
Christine Rapp
Colleen Raymond
Patricia Reay
Florence Reducka
Barb Reid
Florence Reid
Diana Remmer
Andrea Renaud
Michael Renkas
Ashley Rennie
Grant and Jennifer Rennie
Barbara Rice
Richard S. Pirnak
Professional Corporation
Julie and Terry Richelhoff
Deborah Ricketts
Anne Rischke
Peter Rivers
Kathryn Roberts
Darci Robinson-Tobert
Rockliff Pierzchajko
Kroman Architects
Roevin Engineering
Recruitment
David and Cathryn Rogers
Rohit Communities
Eugene W. and Camille J. Romaniuk
Evan Romanow
Marian Rossiter
Andrea and Marc Roy
John Ryan
Ken and Amy Ryniak
Mark Salkie
Judith Samoil
Samuel C. Young
Professional Corporation
Dorothy Sande
Douglas and Lynda Sanderson
Margaret Savage
Save-On-Foods - Strathcona
Darlene and John Scammell
Lorraine Schlotter
Jens Schmarbeck
Vernon Schmid
Bruce Schmidt
Tyler and Carla Schneider
Clarence and Minnie Schoepp
Craig Schoettle
Bert and Hendrica Schouten
Andrea Schroeder
Helen Schuster
Dorri Seemann
Kathleen Semple
Marilyn Shannon
Keara Shaw
Shea Insurance Group Inc
Larry Sheriff
Ryan Thorsen
Mike Tomkins

Marlise Siegenthaler
Sharon Siga
John D. and Lynne Sigler
Ronald L. and Judy Silks
Anthony Simmons
Diane Sinclair
Elaine Sinclair
Meril Singer
Elizabeth Siolane
Linda Smeland
Barb Smith
Tyler Smith
Peter Smith
Smokin' Barrels Food Truck
Soakers Water Hauling Ltd.
Scott Soehn
Sole Experience Inc.
Clarence Soman
Margaret Sombrofsky
Dave Sommers
Clinton and Geneva Spochysyn
Brian and Jan Soutar
South-West Seniors Outreach Society
Donald Spady
Louis and Gail Spavor
Arlene Speers
Spirit of Hope United Church Women
Maida Sproat
St. Agnes Catholic Women's League
Jules Paul and Patricia St. Arnaud
St. Brendan School
Brenda St. Germain
St. Matthew's Anglican Church
St. Thomas Anglican Church
Felix Stark
John Stearns
Amy Stecyk
John and Sparkle Steeves
Keith Stefanik
Alvin Stetler
Patricia Stogrin
Diane Stone
Iris Storie
Strathcona Prescription Centre
Strathearn Heights Ltd.
Judith Straticuk
Mary Stratton
Barry and Marie Strauss
John and Ann Stuart
Suncor Edmonton Area Employees
Glen and Audrey Sustrik
M Jane Sustrik
Christine Swaren
Peggy Tanasiuk
Sharon and Michael Tansey
Richard and Johanne Tarleton
Texcan
Tammy and Dave Thachuk
Tom and Kathy Thackeray
The Artworks
The Catholic Parish of Ste. Anne
The Little Potato Company Ltd.
The Toronto-Dominion Bank - Branch # 716
The Toronto-Dominion Bank - Branch #225
The Toronto-Dominion Bank - Branch # 8333
Elizabeth Thompson
Ann and Robert W Thompson
Ryan Thorsen
Mike Tomkins

Ellinor Townend
Roxann Trouth
Scott Trueman
John and Alana Tucker
Andrea Twardzik
C Patricia and Volker Uhlich
Bev Uibel
Umbrella Injury Law
Myrna Vaculchik
Donna Valgardson
Jordan and Tamara Van Biert
P. Gary and Judy Van Der Vinne
Nick and Anne Van Waes
John and Janet Vanderspoel
Gail and Derk VanEerden
Paul Vanhooren
Thomas and Sharon Vant
Coby Veeken
Ed Verburg
Catherine Vereyken
Ian Vik
Rachel Vincent
David and Bonnie Visser
Dan and Kristine Vriend
Ruth Vriend
Stephen and Phyllis Waite
Linda and Kirby Walker
Karen and Mark Wallace
Norma Ward
Jim Ward
Laurence Waring
Irene Wegner
Gordon Weisenburger
Betty Lou Welsby
Wade Wesolowsky
Kathryn West
Robert and Brenda Whalen
James and Joan White
Steve Whitehouse
Whitemud Ironworks Group Inc.
James and Linda Whittle
Mary and Ed Wiersema
Karl and Susan Wilberg
Peter Wilkinson
Willow Glen Farm
Johanna Wilson
Wolf Willow Manor
Rudolf Wolfert
Helen and Kai Wong
Kenneth Wong
Wai Lee Wong
Deb Woodcroft
Michelle Wozy
Kathy Wright
Klara Wolff
Scott Wylie
George Yackulic
Antonia Yarmon
James and Eleanor Young
Margaret Young
Shauna Young
Jean M and Albert Young
Nicole Young
Kim Zapf
Lori Zastre
Bent Zimmer
Daryl and Eileen Zimmerman
Roman and Dawn Zrobok
Marie Zuccato
Karen Zutter

There is a story behind every number. Contact us to find out more.

T: 780.468.7070

E: giving@yess.org

9310 82 Avenue
Edmonton AB T6C 0Z6

www.YESS.org

@YESSorg



Front cover illustration artwork by Jonathan Busch.

CRA Registered Charitable No.: 12953-7437 RR 0001



YESS

youth empowerment & support services

