



JANUARY 2021

# YESS NEWSLETTER

## MESSAGE FROM MARGO



Hello everyone,

I wish you all a safe and compassionate New Year. This January, as we head into some colder weather and the ongoing realities of the pandemic, I want to highlight the vital, difficult, and often dangerous work youth workers do in our communities. These everyday heroes are not only providing essential services during this pandemic but are also often balancing complex

roles of “front line crisis responder” and “parent/tutor/mentor/life coach” in any given shift, and are often overlooked or not represented in our efforts to thank responders during the pandemic. As you read through this month’s issue and read about our Youth Education and Employment Program and stories about some of our incredible volunteers, donors, and partners, I would ask that you take a minute to recognize youth workers and their commitment to support all of the vulnerable youth in our city.

– Margo

## OODLE NOODLE

**Oodle Noodle is not only a local favourite for Edmontonians, but a hometown hero committed to supporting non-profits with food donations. We talked to Jay Downton, President of Oodle Noodle, about what drives them to give where they live.**

### How does Oodle Noodle give back to the community?

Oodle Noodle donates 200 lbs of noodles and sauces every week to charities that help feed our community. We also donate a portion of our in-store sales to local charities. Both programs started at the beginning of the pandemic, and since March, we have donated 17,000 meals worth of food and \$110,000 for local charities. This program will forever be a part of Oodle Noodle, and we look forward to working with all these great programs in our city.

### Tell us why you choose to support YESS?

It warms our heart to know programming like this exists to help youth who experience both trauma and homelessness. It is important everyone knows the vital role that YESS plays in our community. We just want to do our part to support and share that message.

### Why is it important to Oodle Noodle to support the community?

One of our core values is “Oodle Noodle Loves Edmonton.” It’s great to say that, but it’s more important to back it up with action. This is one of the ways that we want to show our love for Edmonton.



*Oodle Noodle President Jay Downton and founder Sonny Pham get ready to deliver regular donation of noodles and sauce*



**OODLE NOODLE**

---

## GET TO KNOW KATE AND PETER MORRISON!

Kate and Peter Morrison pride themselves on being “prairie people.” Kate was born in Edmonton and raised in Sherwood Park, and Peter is a Saskatchewan farm boy.

They met when they were both working in Regina. After they got married, Kate and Peter worked all across Canada and lived in many different communities. Wherever they were, they believed in helping out local causes through volunteering and, when able, financially.

“Growing up, we both learned the importance of helping others, whether friends, family, neighbours, or strangers,” says Peter.

The Morrison family moved to Edmonton in 2000. Peter joined Canadian Western Bank (CWB) and his work included working with and facilitating CWB’s Community Investment Program. CWB’s focus was and continues to be on local communities, as well as encouraging and supporting its employees to become involved with local organizations. One of CWB’s three primary areas of focus was youth and that was how Peter became aware of YESS.

As he represented CWB at the Homeless for a Night event, the annual YESS gala, at breakfast fundraisers, and at tours of the Armoury Resource Centre, it became clear to Peter that supporting youth could be a personal cause for his family.

“The work YESS was doing struck a chord with us,” says Peter. “Our sons were in their late teens, so we were attuned to that generation. We were fortunate our sons were safe and healthy, but some of their friends were dealing with the effects of substance abuse, sexual exploitation, family breakdown, and suicide.”

The Morrison Family began to support YESS through in-kind donations of new and used clothing, food items, tickets for sporting



events, and through financial gifts. It was during this time that Kate and Peter became aware of the Canada Revenue Agency’s gifts of capital property, including gifts of common shares in public companies listed on a designated stock exchange. This program allows donors to transfer stock “in-kind” to a charity of their choice, receive value as a charitable donation equal to the value of the stock on the day of the transfer, and not be subject to a capital gains tax. For Kate and Peter, this was a cost-effective way to meet their personal donation goals while supporting YESS.

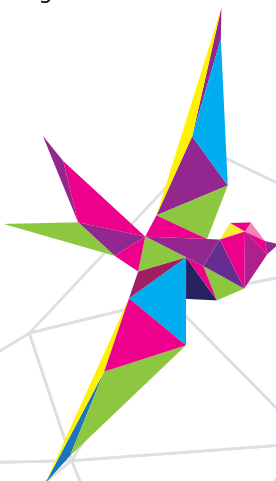
“There are many, many people in this world who are in dire straits. We don’t need to look beyond our neighbourhoods to see the needs,” says Peter, still driven by those lessons he learned long ago to help others in the community. “The youth YESS focuses on will hopefully become the people who will enable future generations to make this world a better place. By helping them we are helping ourselves.”

---

Everyone who makes a **PLANNED GIFT** to Youth Empowerment & Support Services (YESS), regardless of the amount, enables us to provide life-changing trauma-informed care programs, a warm place to sleep, nutritious meals, medical care, job training and education, and housing support to youth who need it the most. And that is an incredibly powerful thing to do!

If you are holding publicly traded securities which have appreciated in value in your non-registered account (e.g., not held in a RRSP or RRIF) consider making a donation “in-kind” to YESS. Your professional advisors can help you plan wisely for the impact you want to make.

For information and to explore opportunities, please contact Senior Development Officer Eileen Papulkas at 780-468-7070 ext. 298 or email her at [eileen.papulkas@yess.org](mailto:eileen.papulkas@yess.org). You may also contact our Development Department at [giving@yess.org](mailto:giving@yess.org) or fax 780-466-1374. We would be delighted to hear from you.



# YOUTH EDUCATION AND EMPLOYMENT PROGRAM UPDATE

We have completed our first year of the Youth Education and Employment Program. Thanks to our partners, this program has already been a success! Because YESS focuses on low-barrier access, the Youth Education and Employment Program has been able to support youth who might not have had access to other education and employment resources.

These supporters are having a direct and positive impact on the lives of youth in Edmonton. Thank you for being part of the community walking beside youth on their journeys towards healing and appropriate community integration.

## Youth Education and Employment Program Partners

Atlantic Fence	MC College
Boston Pizza Whyte Ave	McDonald's
Evergreen Recycling	Trinity Youth Project
FIND Edmonton	Waiward Steel
Home Depot Strathcona	Walk the Talk
Inland Audio Visual	YESS Kitchen

**39 Youth**

**participated in the Youth Education and Employment Program in its first year**

**22 Youth**

**completed the program successfully**

**12 Youth**

**moved into employment or education after the program**

**Youth received training**

**in First Aid, ProServe, WHMIS, fork lift training, etc.**

## Skip the Depot makes recycling easy for you!

1. Sign up and schedule your pickup with the Skip the Depot app
2. Put your bagged bottles outside on your pickup date
3. When you get your refund, you have the option to donate it to your favourite charity - including YESS!



homeward trust  
edmonton  
opening doors. building hope.

Revenue Canada Business No 12953-7437RR001