



YESS ANNUAL REPORT

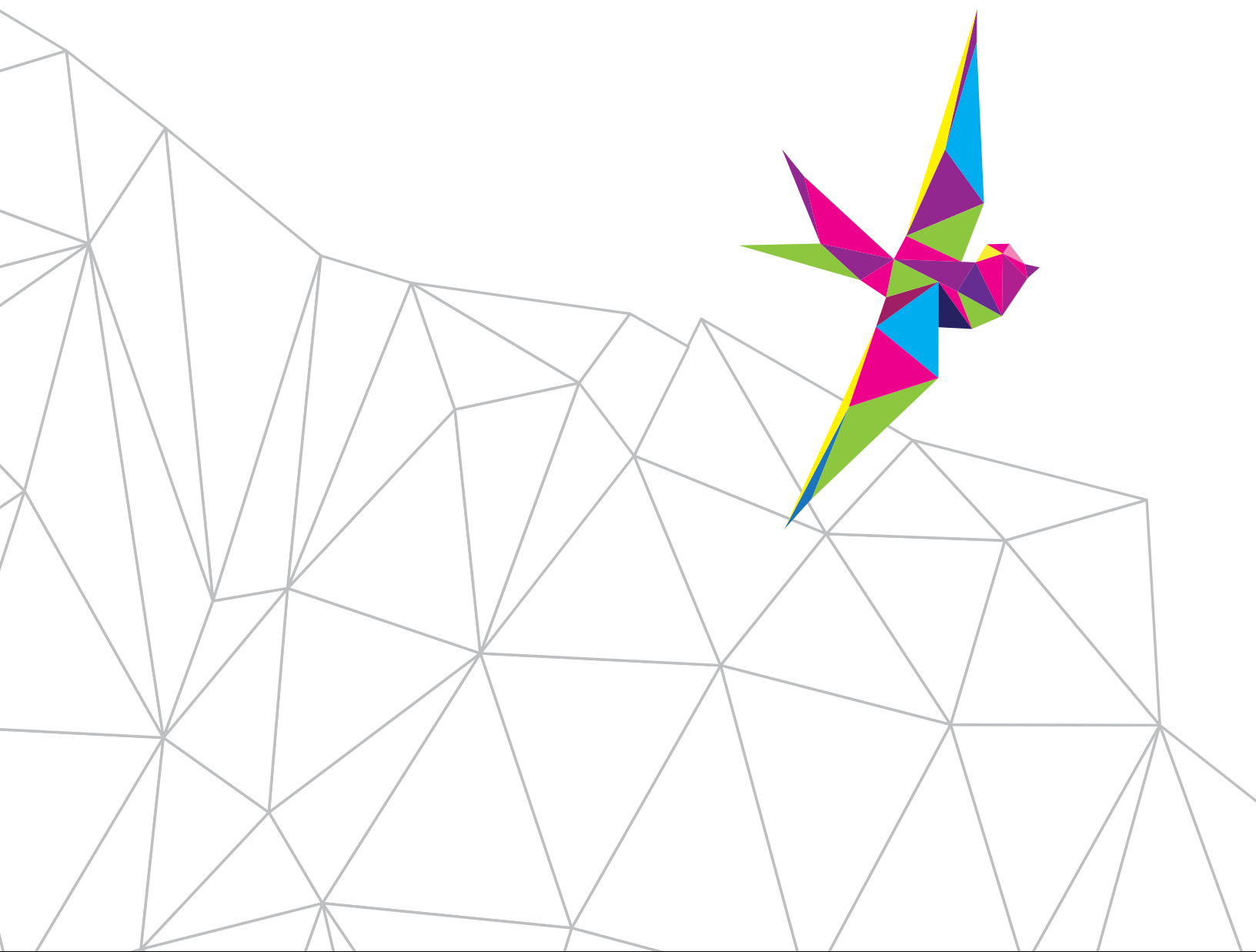
2023-2024

APRIL 1, 2023–MARCH 31, 2024

YESS

youth empowerment & support services





CONTENTS

Board of Directors	4
Message from Leadership	5
YESS 2023–2024 Programs	7
YESS 2023-2024 Youth Numbers and Statistics	11
New Strategic Direction 2024–2029	12
The Youth Agency Collaboration	15
Awards	16
Statement of Operations	19
Funding	20
Expenses	20
Operating Budget	20
YESS Supporters	21

BOARD OF DIRECTORS

Steven Ewaskiw, CPA, CA

Board Chair
VP Finance, Cantiro Group

Rebecca Visscher

Board Vice-Chair
Social Planner, City of Edmonton

Colin Lipsett, B.A. LL.B.

Board Secretary
Barrister and Solicitor, Alberta Justice

Kurtis Letwin

Board Treasurer
Senior Associate, Dentons Canada LLP

Okama Brook

Board Director
Founder & ED, Africa Caribbean Heritage
Alliance Foundation

Sarah Denholm

Board Director
Lawyer, Field LLP

Maryann Everett, MBA, CMC, ICD.D.

Board Director
Assistant Deputy Minister,
Government of Alberta (Retired)

Richard Iwaniuk, FCA

Board Director, Past Chair
VP Finance and Business Operations,
GPZ RCA Investments, Corp.

Michele Jackson

Board Director
Consultant

Amanda Kim

Board Director
Facility Chief – Surgery,
Misericordia Community Hospital

Emma Wynters

Board Director
Key Accounts Manager – Canada,
Prolenium Medical Technologies

Cynthia Zutter, PhD

Board Director
Professor, MacEwan University

Maria di Stasio

Associate Board Director
Assistant Professor, MacEwan University

MESSAGE FROM LEADERSHIP

LETTER FROM THE PRESIDENT & CEO

Hello, everyone,

We are so grateful to have our community with us as we embark on an era of change at YESS.

Throughout our 43 years, YESS has embraced the spirit of evolution and continuous improvement to be able to provide youth with the help they need when they need it and where they need it. We have transformed from an overnight emergency shelter to being a collaborative partner in a community of youth care leveraging more than 30 youth agencies.

In 2018, we created an in-house trauma and mental health support program with our Wellness Integration team of psychologists and support practitioners. In 2021, YESS restructured our overnight shelter program to 24/7 access. In 2023, we moved our daytime primary medical care clinic, navigation staff, and resources from the Armoury Resource Centre to our Whyte Ave building to share space with our 24/7 crisis intervention and stabilization program and reduce barriers to access for youth, creating our first Youth Support Centre.

I am so proud of our staff for their expertise, innovation, and leadership. The strength of the relationships they have built with youth, with our fellow youth-serving organizations, and with our community of support have brought YESS to where it is today.

One thing that has stayed constant over these 43 years is the positive impacts we can have on youth when we all work together. Thank you so much for continuing to advocate for youth!

Thank you,

Margo Long

President & CEO

Youth Empowerment and Support Services



LETTER FROM THE BOARD CHAIR

As we approach the end of this remarkable year, I am filled with immense gratitude for each and every one of our donors, fellow board members, and the incredible team at YESS. Your unwavering commitment to our cause has made a profound difference in the lives of the youth we serve. Together, we have created a ripple effect of hope, resilience, and transformation.

To our generous donors, your compassion knows no bounds. Whether through financial contributions, in-kind support, or volunteering your time, you have been the lifeblood of our organization. Your belief in our mission has allowed us to expand our reach and provide essential services to vulnerable youth. From the bottom of our hearts, thank you.

To my esteemed fellow board members, your strategic vision and tireless dedication have been instrumental in shaping YESS' path. Through countless meetings, discussions, and shared insights, we have navigated challenges and celebrated victories. Your leadership inspires us all, and I am honored to serve alongside you.

Our incredible staff members are the heartbeat of YESS. Day in and day out, you pour your hearts into supporting our youth. Your empathy, resilience, and creativity have transformed our programs. As we move forward with 24/7 access for youth, your commitment to their well-being shines even brighter. The 24/7 intake centre and resource hub will be a beacon of hope—a place where young individuals can find safety, healing, and a path forward. Our commitment to youth extends beyond our previous shelter and programming hours. With 24/7 access, we will be there for them whenever they need us. The 24/7 intake centre and resource hub will provide holistic support, addressing not only immediate needs but also long-term well-being.

I am also thrilled that YESS is also helping to lead the charge in our role in the Youth Agency Collaboration, as we work with our partner youth agencies to connect and collaborate as we continue to grow together. Together, we will continue to walk beside young people to overcome adversity and build brighter futures.

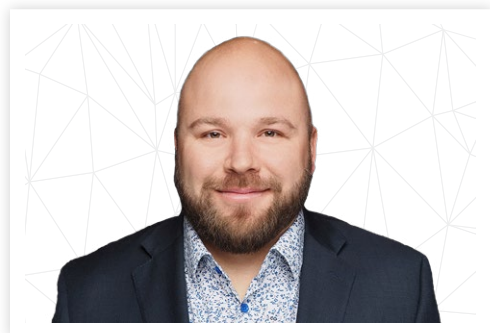
As we reflect on the past year, let us carry forward the spirit of courage, connection, and commitment. Our collective impact is a testament to what can be achieved when hearts unite for a common purpose. Thank you for being part of this extraordinary journey.

With heartfelt appreciation,

Steven Ewaskiw

Board Chair

Youth Empowerment and Support Services



YESS 2023-2024 PROGRAMS

In the Spring of 2023, we made the evidence-based decision to consolidate the resource and health services offered at our Armoury Resource Centre (ARC) into our Whyte Avenue building to be co-located with our 24/7 shelter.

This decision was in direct response to a number of factors:

- A steep decline in attendance at the Armoury Resource Centre
- Youth indicating they prefer to stay at Whyte Avenue during the day
- Research through the Youth Agency Collaboration indicating mental and physical health resources must be collocated onsite
- Research and progress through the Youth Agency Collaboration indicating the need for streamlining process and intake for youth in crisis to one 24/7 door in community

On June 1st, 2023, YESS created the first Youth Support Centre as part of the larger Youth Strategy developed collaboratively by the Youth Agency Collaboration. This involved moving all program staff and services into the Whyte Avenue building and moving all administrative teams out of Whyte and into the Armoury building. This move also allowed us to begin to create a new, streamlined and more trauma informed crisis intake process and holistic assessment looking at the physical, emotional, mental, and spiritual/cultural skills and knowledge a young person possesses and/or needs for their self development. We spent a year developing, testing, adjusting, and evaluating this centre design to be the first point of contact and entry point into the Youth Agency Collaboration Youth Strategy.

YESS Whyte Avenue Youth Support Centre

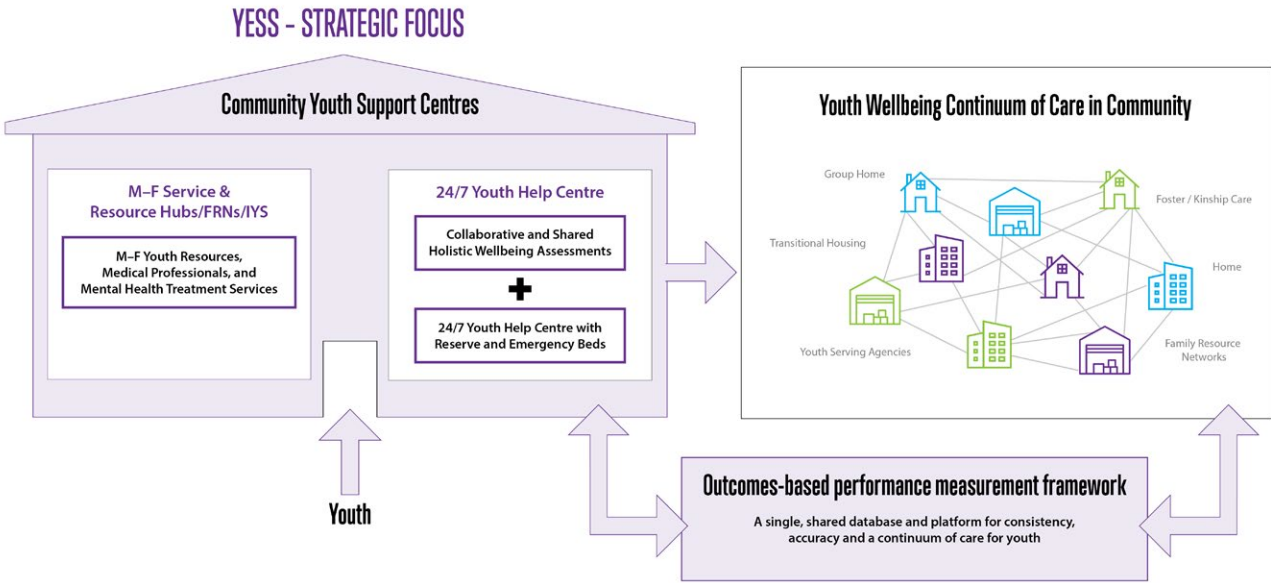
RESOURCE AND HEALTH HUB (M-F) FOR YOUTH 15-24

- Onsite Medical clinic
- Onsite Mental Health clinic
- Housing connections
- Cultural and identity supports
- Employment and Education connections

24/7 INTAKE AND HELP WITH SAFE SLEEPING FOR YOUTH 15-21

- Crisis intake, triage, de-escalation and stabilization, regulation
- Stabilization and Transition beds
- Holistic assessment and entry into complex care within the Youth Agency Collaboration

YESS YOUTH SUPPORT CENTRE WITHIN THE YOUTH AGENCY COLLABORATION STRATEGY



24/7 Help

Our 24/7 crisis intake and stabilization program provides youth a safe, secure and immediate place to sleep and seek supports. The program is open 24 hours a day, seven days a week as an intake center for youth experiencing crisis or instability. We provide beds for sleeping, basic needs like food, clothing, showers, laundry, school supplies and packed lunches for youth attending schools. We also support new holistic assessments that determine what is needed for youth to stabilize and divert to safe and appropriate placements. We are 2SLGBTQIA+ friendly, we have harm reduction and recovery minded staff, with suicidal ideation intervention and safety planning training. We also provide on-site trauma supports to assess and support with sleep anxiety, problem solving, emotional regulation and crisis regulation. Youth requiring complex care will also go through a holistic assessment to determine their mental, cultural, emotional, physical capacities and skills, so we can begin the process of successful community re-integration and healing.

STABILIZATION, REGULATION, SAFETY PLANNING, AND REFERRALS

Our intake process is now streamlined to one process that can start whenever a young person in crisis walks through the door and to ensure they get the help they need when they need it.

PHASE 1: STABILIZATION

When we do our initial welcome and engagement fact finding and determine what immediate needs a youth has within 24 hours. This includes our necessary demographics, as well as what basic or immediate needs they need for survival, or to address why they are in crisis.

PHASE 2: REGULATION

When we are able to start completing a regulation checklist with youth that helps us to determine a baseline of understanding for their skills and capacities – what they bring already and what they need to work on to grow and develop successfully. We work on identifying what important needs must be addressed with 7 days of their initial intake so we can be sure they are being referred to the right agencies or partners, for the right reasons.

PHASE 3: SAFETY PLANNING

We understand that if youth are existing within their family structure, the community, other agencies or in future placements, we will need to help them understand felt safety, psychological safety, physical safety and how or when to connect back with staff. These plans initially helped youth feel more supported when they visited family or ventured into the community if something escalated for them. However now we are able to better assess their self literacy and safety needs with our onsite Child and Youth Care Counsellors. This will now help us assess their mental health needs and what is necessary for them to feel safe in the world.

PHASE 4: REFERRALS

Once we understand who a youth is, what skills/capacities they bring, what needs they have, what growth is needed and what safety means for them, we are able to provide a warmer hand off to community partners. This means that youth will have a full needs assessment to provide to their community agents so they can fully understand who this youth is today and how they can help or support. It will reduce the stigma and the need to tell their story repeatedly.

2023-2024 Program Numbers and Statistics

Total Youth Served between April 2023 and April 2024 – **897**

YOUTH SERVED BY PROGRAM

APRIL 2023 – JUNE 2023 YESS Programs

- 218** youth served
ARMOURY RESOURCE CENTRE (ARC)
- 153** youth served
24/7 SHELTER (16 BEDS)
- 7** Youth served
GRAHAM'S PLACE TEMPORARY SUPPORTIVE HOME (7 BEDS AT WHYTE AVE)
- 9** youth Served
SHANOA'S PLACE TEMPORARY SUPPORTIVE HOME (6 BEDS) IN WEST END

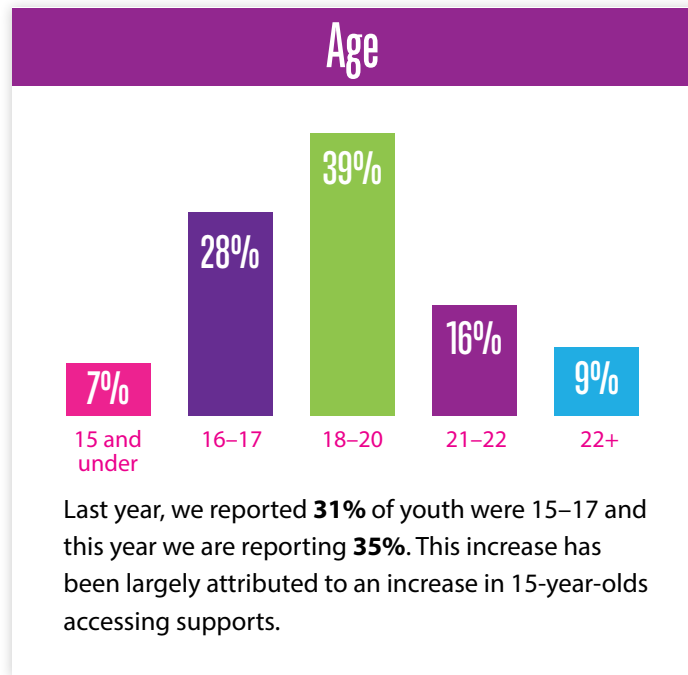
TOTAL YOUTH SERVED
APRIL 1, 2023 – JUNE 1, 2023
387

JUNE 2023 – APRIL 2024 YESS *NEW* Programs

- 494** Youth served
YESS YOUTH SUPPORT CENTRE (24/7 16 bed shelter combined with ARC resources and medical and mental health clinics, and 7 transitional beds)
- 16** youth Served
SHANOA'S PLACE TEMPORARY SUPPORTIVE HOME (6 beds) in West end

TOTAL YOUTH SERVED
JUNE 2023 – MARCH 3, 2024
510

YESS 2023-2024 YOUTH NUMBERS AND STATISTICS



Personal Identity

43% of youth completed the personal identity touchpoint.

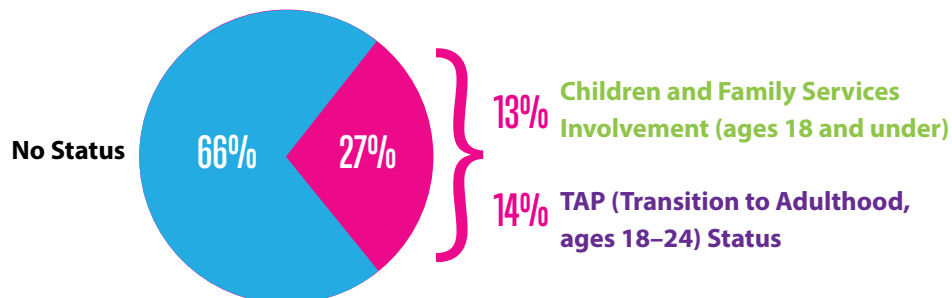
Youth identified under the **GENDER** Expression umbrella of 2SLGBTQIA+



Youth identified under the **SEXUAL** Expression umbrella of 2SLGBTQIA+



Children and Family Services Involvement



NEW STRATEGIC DIRECTION 2024-2029

Since 1981, YESS has been evolving in how we understand and improve our support of youth.

In 2017, we identified that untreated trauma is a major causal barrier in youth success and wellbeing. In previous youth support strategies, the focus has been on providing solutions to address symptoms and not enough on addressing the root cause of their difficulties: family and community breakdown and the untreated trauma in young people as a result. Over the last seven years, we re-positioned our organization to focus on understanding trauma and supporting youth on their healing journeys, resulting in better outcomes for youth.

These changes include:

- Building an **in-house Wellness Integration Team** of psychologists and support practitioners to provide trauma-informed youth crisis stabilization and mental health education, to support front-line youth workers in crisis support and post-crisis healing, as well as programming and connections to cultural, identity, and spiritual supports for youth.
- Co-founding the **Youth Agency Collaboration** and helping to bring together more than 30 youth serving agencies (and growing) to create a connected and collaborative strategy for youth wellbeing and prevention of further chronic symptoms such as homelessness, addiction, and criminal involvement.
- Transitioning to a **24/7 Intake Centre** for youth because crisis can happen anytime, and youth need a place to stabilize and sleep during the day.
- **Consolidating our resource hub, medical clinic, and shelter** within a single location to make it easier for youth to have access to programs, services, and supports.

In March 2023, we completed our 2018–2023 5-Year Strategic Plan and have spent this past year understanding our expertise and value in the sector, as well as what is needed most in our community.

The work we have done in listening to youth and youth workers has led us to make some very big changes in our philosophy, programming, and strategic direction for the future.

Our New Vision

A more connected, holistic, and lower-barrier system for youth in crisis.

Our New Mission

Ensure 27/4 access, safe sleeping, and compassionate holistic support within a network of care to ensure youth get the expert help they need, when they need it, and where they need it.

Our Updated Values

Courage to be honest, vulnerable and curious.

Connection with ourselves and others to establish trust, empathy, and understanding.

Commitment to lead with intention, to make a meaningful difference and be accountable in all we do.

Our Expertise & Focus

Providing 24/7 help (intake, triage, stabilization, regulation) and providing holistic lifeskills and wellbeing assessments for youth needing complex care in the larger Youth Agency Collaboration.

Our NEW 5-Year Goals

GOAL #1:

ORGANIZATIONAL CULTURE OF SAFETY, COLLABORATION, LEARNING, AND LEADERSHIP

- Includes Occupational Health and Safety (OHS), training and development opportunities, as well as staff wellness and Equity, Diversity, and Inclusion (EDI)
- Ensuring holistic safety and support for staff
- Reflects youth-centred philosophy of modelling healthy secure relationships
- Focus is on building a leadership, coaching, and learning culture

GOAL #2:

PROGRAM LEADERSHIP IN HOLISTIC, COMPLEX CARE FOR YOUTH

- Encompasses our commitment to ensure young people get the help they need, when they need it
- Includes continued contribution to and leadership within the Youth Agency Collaboration
- Requires continued leadership in collaborative relationships to ensure a strong continuum of holistic complex care for youth

GOAL #3:

FINANCIAL STRENGTH AND STABILITY

- Encompasses fund development, community granting, and government partnerships/agreements
- Encompasses business process improvement and risk management
- Involves investments strategy and diversified revenue streams
- Includes building collaborative external partnerships with other organizations to develop different funding models

THE YOUTH AGENCY COLLABORATION

CREATING A CONNECTED CONTINUUM OF CARE THAT ENSURES YOUTH GET THE HELP THEY NEED, WHEN THEY NEED IT, AND WHERE THEY NEED IT.

The Youth Agency Collaboration was formed in 2018 for youth-serving agencies to collaborate and share experiences, information, and ideas to improve outcomes for youth.

Today, YESS and more than 30 youth-serving agencies across Edmonton are part of the Youth Agency Collaboration, working together to address the barriers that youth face with regards to safer spaces, trained help, holistic wellbeing support, and transitional housing that are all accessible 24/7, and in the communities where they live.

The new structure of YESS' Youth Support Centre is a key component of the Youth Agency Collaboration, offering 24/7 intake, crisis stabilization, and safe sleeping for youth ages 15–21, as well as daytime access to drop-in medical and mental health services, housing connections, and other resources for youth up to age 24. YESS' Youth Support Centre programs also support entry into the Youth Agency Collaboration continuum of complex care, should it be required.

Objectives

- Work together to build a strategic, cost-effective, and integrated continuum of complex care for youth.
- Streamline and coordinate intake, holistic assessment, and evaluation using a shared data system.
- Eliminate the need to compete for funding and build stronger connections between partners.

AWARDS

Janet Hughes Award from the Edmonton Food Bank - Tiffany Sorensen, Program Kitchen Coordinator

YESS Chef Tiffany Sorensen was awarded the Janet Hughes Award from Edmonton's Food Bank, which honours an individual's commitment to direct food relief and solving the underlying causes of hunger. Tiffany has worked in our kitchens and programs for almost eight years, not only providing nutritional food for youth but also teaching cooking as an important life skill.

Tiffany was nominated for this award by YESS Chief Program Officer Jessica Day, and President and CEO Margo Long. This award from Edmonton's Food Bank is named after Janet Hughes, the first chairperson when Edmonton's Food Bank was formed in 1981.

As the Program Kitchen Coordinator for Youth Empowerment and Support Services (YESS), Tiffany Sorensen considers food, meals, and nutrition as more than mere necessities. Instead, she sees them as powerful tools that can aid young people in healing from trauma, developing resiliency, and acquiring new skills that can benefit them for life.

YESS youth come from a variety of backgrounds and regardless of their unique experiences, they are all experiencing trauma. Tiffany weaves this understanding into her work and prioritizes providing a safe and supportive space with interactions rooted in compassion and kindness.

Tiffany works with youth to educate them about food safety, nutrition, and fundamental kitchen skills, preparing them for their eventual transition to independence. She encourages young people to voice their opinions and preferences regarding food, allowing them to participate in creating the weekly menus or requesting homemade meals for their birthdays. By doing so, she fosters healthy relationships and addresses the underlying trauma associated with food and food security.

Tiffany has been deeply influential in supporting and collaborating with food bank locations within Edmonton. As our liaison, she fosters relationships with both locations and expertly manages expectations, communication, access, and resource supports. Her careful attention and nurturing demeanor make a meaningful difference in the lives of our youth, who feel empowered to ask for assistance thanks to her work reducing the stigma surrounding support-seeking. Even throughout the pandemic, Tiffany's dedication and advocacy for our partners have remained unwavering.

In addition to her partnership-building skills, Tiffany has also leveraged her talents to produce short videos that demonstrate creative ways to use food bank items in both simple and complex meals. Her innovative approach to food inspires both our youth and staff, and she infuses each interaction with compassion and kindness, recognizing the unique trauma that our youth have experienced.

EMCN RISE Community Champion Award - Delalie Mortotsi, Director of Programs

The EMCN RISE Awards celebrate the accomplishments of newcomers and immigrants in the Edmonton area who demonstrate outstanding commitments to creating a more welcoming and inclusive community for all and commendable service to building strong communities through social, cultural, and economic development.

The Community Champion Award recognizes an individual's or group's exceptional contributions to their community and their commitment to positively impacting the lives of those around them. They demonstrate exceptional leadership, collaboration, advocacy, and innovations in their efforts to strengthen community awareness for newcomer equity. This can include volunteering time, energy, and resources towards a particular cause or organization, advocating for social justice and newcomer equality, or leading community-wide initiatives to improve the newcomer community's wellbeing.

Dela's nomination was supported by Jessica Day, Chief Programs Officer, YESS; Eman Mohamed, Compass Supervisor, YESS; Karley Spelrem, Transition Team Lead, YESS; previous YESS youth; Karis Nsofor, Ethno-Cultural Capacity Building Project Manager, Edmonton Chamber of Voluntary Organizations; Tina Pye, Contracts Specialist, Alberta Children and Family Services, Government of Alberta; Belen Samuel, Edmonton change-maker.

"As a pivotal leader within YESS, Dela champions growth and development by embracing transparent communications, maintaining consistent leadership, and being open to various perspectives, ideas, and methods to tackle challenges faced by youth or staff. Her influence at YESS is multifaceted and marked by her historical understanding, extensive knowledge, flexibility, agility, and unwavering consistency. She places strong emphasis on accommodation and collaboration, aspects that permeate every layer of the organization. From personal growth and leadership to youth processes, program development, training, community engagement, and interactions with executive teams and various departments, Dela's guidance shapes and enriches all these areas. Her leadership paints a picture of an adept and compassionate leader, steadfastly committed to the holistic well-being and success of the organization and the individuals it serves.

"Dela has contributed unique expertise in supporting newcomer staff and youth within YESS. Her experience in navigating the immigration process and pathways to citizenship have been invaluable. Dela has established herself as a process expert and builds relationships with youth based on encouragement, trust, accountability, and predictability. She extends beyond merely empowering young individuals; she has skillfully created a nurturing environment where they feel at ease approaching her with any concerns or grievances. The youth know that they can count on Dela's fairness and transparency, solidifying her role as a supportive and reliable figure in their lives. Her nuanced understanding of their needs and her authentic approach to relationship-building highlight her exceptional dedication to those she serves."

CPA Alberta Early Achievement Award – Eddie Gots, YESS CFO

The CPA Alberta Early Achievement Award recognizes individuals whose achievements in their career and community have brought honour to their profession.

This award is a testament to Eddie's dedication, expertise, and outstanding contributions to our organization and many others along the way. His relentless pursuit of excellence, innovative strategies and commitment to financial stewardship have significantly contributed to what YESS is today. Since joining YESS, Eddie has transformed its internal financial practices, implementing controls and an accounting structure that helped us become more financially stable and sustainable. He has also helped create a culture of trust and confidence at YESS and improve the quality of life for the YESS community.

Eddie's dedication to financial education and empowerment has resulted in increased financial safety and sustainability for the team at YESS. His mentorship has provided personal growth opportunities for staff and board members, enhancing their financial literacy and confidence. Additionally, Eddie's departmental empowerment initiatives have allowed staff members to take more ownership of financial matters, fostering a sense of responsibility and pride in their roles. Today, YESS has been able to reestablish our contingency reserves and maintain our budgets, and this financial stability has ultimately allowed us to get back to doing what we do best: Provide opportunities for youth in need and prepare them for life ahead.

Eddie has made significant strides in transforming both his organization and community. His leadership exemplifies a commitment to sustainable growth and philanthropy, leaving a lasting legacy of positive change.

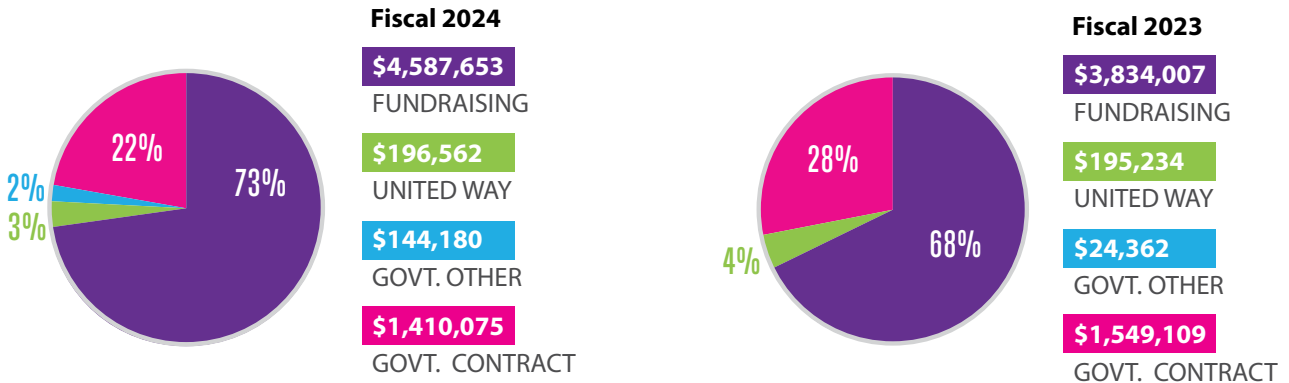
STATEMENT OF OPERATIONS

For the year ended March 31, 2024, with comparative figures for the year ended March 31, 2023

	Fiscal 2024	Fiscal 2023
REVENUE		
Unrestricted Revenue:		
Donations	\$ 1,332,855	\$ 1,380,810
Special Fundraising Events (net)	196,953	445,784
Investment (Loss) Income	655,145	(69,993)
United Way	46,562	45,234
Other Revenues	148	4,183
Total Unrestricted Revenue:	2,231,663	1,806,018
Restricted Revenue:		
Children's Services – Edmonton Region	1,280,075	1,010,585
Casino and raffle	70,437	67,671
Donations	18,199	21,282
Government Grants	73,354	406,545
City of Edmonton	200,826	156,341
Grants – Foundation & Other	2,173,587	1,838,761
United Way – Grant	150,000	150,000
Amortization of Deferred Capital Contributions	140,329	145,509
Total Restricted Revenue:	4,106,807	3,796,694
Total Revenue:	6,338,470	5,602,712
EXPENSES		
Wages and benefits	4,586,935	4,656,494
Direct client	115,461	322,431
Facility	348,909	351,985
Administrative	525,503	633,606
Fundraising	16,294	48,930
Amortization	220,804	232,280
Total Expenses:	5,813,906	6,245,726
Excess of (expenses) revenue for the year	\$ 524,564	\$ (643,014)

Please visit yess.org/our-impact to read our audited financial statements.

FUNDING



*Fundraising includes donations, internal/external events, and grants.

EXPENSES

It currently costs just over **\$6,482/year** to serve one youth at YESS for one year, compared to the over \$100,000/year (EndPovertyEdmonton 2015) it costs to serve one entrenched and addicted homeless adult. Preventing youth homelessness is both a prudent investment and the right approach to ending the cycle of homelessness.

	Fiscal 2024	Fiscal 2023
AVERAGE COST PER YOUTH*	\$6,482/year	\$8,961/year
FUNDRAISING COSTS	\$16,294	\$48,930
ADMINISTRATIVE COSTS	\$525,503	\$633,606
STAFFING**	\$4,586,935	\$4,656,494

* Fiscal 2024: 897 Youth / Fiscal 2023: 697 Youth

** Fiscal 2024: 74 Staff / Fiscal 2023: 80 Staff

OPERATING BUDGET



YESS SUPPORTERS



Thanks to our amazing donors, we're able to provide programs and resources for youth and walk beside them on their journeys towards healing and appropriate community integration. We would like to give a special thanks to the following donors for being some of our greatest supporters this past year.

\$10,000 and up

5 Days for the Homeless	Charitable Foundation	Albert Dousse	Community Foundation	Foundation	The Home Depot Canada Foundation	Berg
Alberta Milk	Community of Christ	Fairway Legacy Foundation	LACIE Foundation	RBC Foundation	The Masonic Foundation of Alberta	Wendy-Anne Berkenbosch
Allard Foundation Ltd.	Con-Spec Industries Ltd.	Family & Community Support Services Association of Alberta	Lawrence & Edith McRae Fund at the Edmonton Community Foundation	REALTORS® Community Foundation	The Melton Foundation	Kathleen Blake
AltaGas Ltd	Cosmopolitan International Club of Edmonton	Fellowship Christian Reformed Church	Ledcor Group	Rick and Shannon Arndt Charitable Gifts Fund	The Orthodox Fellowship Club of Edmonton	Morley and Valerie Blanch
Amalgamated Mining & Tunnelling Inc.	CSU 52 Benevolent Society	First Christian Reformed Church	Local No. 37 of the Edmonton Public Teachers' Association	Rogers Communications Canada Inc.	The Stollery Charitable Foundation	Pieta and Herman Borkent
Apple Inc.	Deb Cautley Award Fund at the Edmonton Community Foundation	Gerald Knoll Family Fund at the Edmonton Community Foundation	Margaret Rose Christensen Family Memorial Fund at the Edmonton Community Foundation	Rotary Club of Edmonton Gateway	The Tenaquip Foundation	Linda Breikreitz
Appleyard Foundation	Denman Endowment Fund at the Edmonton Community Foundation	Gibson Energy	Martin Deerline	Rotary Club of Edmonton South	Torskeklubben of Edmonton	David and Gwen Burroughs
ATB Financial	Devon United Church UCW	Gilead Alberta ULC	Matt & Betty-Jean Baldwin Foundation	Rotary Club of Edmonton Whyte Avenue	United Way of Calgary, Donor Choice program	Heidi and Antoine Bussiere
ATCO EPIC	DLC Mortgage Mentors - The Collin Bruce Mortgage Team	Government of Alberta	MC College Group Inc.	Second Glance Clothes Ltd.	United Way of Greater Toronto	Karin Butt
Audrey & Harold Eikeland Fund at the Edmonton Community Foundation	Dynamic Manufacturing Solutions Inc	Government of Canada	McCarthy Family Fund at the Edmonton Community Foundation	Shirley & Gordon Gifford Family Fund at the Edmonton Community Foundation	United Way of the Alberta Capital Region	Joe Cairo
Baher Family Fund at the Edmonton Community Foundation	Eberlein Family Charitable Foundation	Habberjam Mechanical Inc	Mclvor Kent Endowment Fund at The Edmonton Community Foundation	Sonic 102.9	W.A. & M. Hiller Fund at the Edmonton Community Foundation	Murray and Margaret Cann
Blackburn Davis Financial	Ed & Rita Foy Memorial Fund at the Edmonton Community Foundation	Hospitaller Order of Saint John of Jerusalem	MLC Group Inc.	South Cooking Lake United Church	Weir Family Fund at the Edmonton Community Foundation	Shelly Chamaschuk
Blush Lane Organic Produce Ltd.	Impark	Humanis Talent Acquisition & Advisory	National Money Mart	St. Andrew's Quilters	William & Florence Lede Family Foundation	Jason Chartrand
Boston Pizza Northern Alberta	Inglewood Christian Reformed Church	Intact Insurance	Neerlandia Christian Reformed Church	St. David's Anglican Church	Workers' Compensation Board - Alberta	Patricia Cheung
Bryan & Company LLP	ISL Engineering and Land Services Ltd.	Intact Insurance	NFP Canada Corp.	St. Joseph Charities Society	Youth Emergency Shelter Society Fund at the Edmonton Community Foundation	Michael Cohen
Building Owners & Managers Association of Edmonton	Jack and Margaret Charlesworth Foundation	Intact Insurance	Northbridge General Insurance Corporation	St. Paul's Foundation	Kathryn and Rick Adelsberger	Shannon and Jeff Cory
Butler Family Foundation	James Sinclair Management Ltd.	ISL Engineering and Land Services Ltd.	Northern Materials Engineering Ltd.	Stantec	Chris Ambrozic	Maya and Jonathan Davidow
Cable Family Community Endowment Fund at the Edmonton Community Foundation	Jim Pattison Developments Ltd.	Edmonton Community Foundation	Order of Ahepa Aurora Borealis Chapter No CJ10	Strathcona High School	Richard and Shannon Arndt	Tim Drader
Cam & Dawn Allard Family Foundation	John Brooks Company Ltd	Edmonton Community Foundation	Our Lady of Fatima Association	Suncor Energy Inc.	Cameron Barr	Gail and Greg Drechsler
Canadian National Railway (CN)	John Slatter Fund at the Edmonton Community Foundation	Edmonton International Airport	Pasini Family Fund held at the Nicola Wealth Private Giving Foundation	Swainson Miki Peskett LLP	Alan and Jantien Beacham	Alan and Jane du Heaume
Canadian Red Cross	K7 Fund at the Edmonton Community Foundation	Edmonton North District Area Council 2	PAX Empowerment Fund	TC Energy	Michael Beechinor	Judith Dyck and James Flett
Capilano Glass 2000 Ltd.	Kevin Gaetz Charity Fund at the Edmonton	Edmonton Oilers Community Foundation	Peter Gilgan Foundation	TD Canada Trust	Steven Bell and Culley Schweger Bell	Wendy Edey
Cenovus Energy	Enbridge Pipelines Inc.	Edmonton Royal Purple Lodge #22	Petrin Mechanical Ltd.	TELUS	Stephen and Jessie Bemoont	Andrew Ellis
Chalmers-Castle Downs United Church	EPCOR	Eldon & Anne Foote Fund at the Edmonton Community Foundation	PwC Canada	TELUS Friendly Future Foundation	Kenneth and Sharon	Peter and Cathy Faiazza
Chapel of St. Luke & St. John	Estate of Bernard	Chalmers-Castle Downs United Church		The Allan & Sally Sawin Foundation		Joan Fargey
Chwelos DeBelsler Family Foundation		Chapel of St. Luke & St. John		The City of Edmonton		Kent Fargey
Cliff Lede Family		Chwelos DeBelsler Family Foundation		The David & Nancy Foreman Charitable Gift Fund		J.R. Frey
		Cliff Lede Family		The Dinner Optimist Club of Edmonton		Gail and Barry Giffen
				The Green Depot Fort McMurray Inc.		Tony Gnanasiamany
						Edward Graham
						Thomas and Lisa Gryba
						Janice Guidinger
						Nancy Gutteridge
						Margaret Halford
						Donna Hammerlindl
						David and Catherine Harbinson
						Ian Hardman

Gwen Harrison	Judith Sangster	Family Fund at the Edmonton Community Foundation	James Bell	Michael Hudec	Darci Robinson-Tobert	CanadaHelps
Philip Haug	Stephen Robins and Elizabeth Schick	Encore Trucking & Transport Ltd.	Kathy Bellamy	Taryn Hunchak	Carolynne Ross	Capital Power's Empower Hours Program
Brian and Bernita Hayden	Leonard and Heather Shankowsky	FLEXXAIRE INC.	Daniel Bokenfohr	Mohamed Jamal	Janet Ross	COBS - Rutherford
Gordon and Louise Height	Chris and Dale Sheard	Goonchen Family Fund at the Edmonton Community Foundation	John Boonstra	Janet Jansen	Andrea and Marc Roy	Coronado United Church Women
Irene Henderson	Takahiko Shimizu	Highlands United Church	Val Brandt	Allyson Jeffs	Ena Rudovics	Costco Wholesale Canada Ltd. - W Edmonton Business Centre #656
Jeff and Cori Henkelman	Brune and James Rick Sinneave	Hosanna Lutheran Church	Emily Brodeur	Peter Jenkins	Connie and Barry Runnalls	David & Janet Bentley Family Fund at The Edmonton Community Foundation
Jeremy Herbert	Robert and Carol Snyder	Laing Family Fund	Susan Browning	Eileen and Dan Johnstone	Tim and Janessa Ryan	Douglas & Jane Wilson Fund at the Edmonton Community Foundation
George Huybregts	Marilyn and Stan Solikoski	Lang Locksmiths Ltd.	Mary Cameron	Philip Karpluk	Craig Ryan	Dr. Donald Massey School
Clare Irwin	Marilyn and Stan Solikoski	LeGrand Northwest Ocularists (2013) Inc.	Brendan Cardiff	Jack and Evanthia Keaschuk	Thomas Saunders	Edmonton Area Sun Club
Don Iveson and Sarah Chan	Valerie and Morten Sorensen	Manisha Witmans Professional Corp	Joann Chabaylo	Wolfgang Keuling & Janet Walter	Shirley Scott	Edmonton Zone Medical Staff Association
Robert and Margaret Iveson	Robert and Elizabeth Stangeland	Mather Charitable Trust	Jan Chalk	Barbara Kruger	Anita Sielecki	Electronic Arts (EA)
Padmini Jandhyala	Myrosław Szulhan	McCuaig Desrochers LLP	Brent Christopherson	Ingrid Larsen	Gayle Simonson	Emmanuel Community Reformed Church
Brian and Elizabeth Jolly	Norman Temple	MTD Contracting LTD	James and Patricia Coe	Donald Bruce Laverty	Paula Siwik	Enterprise Holdings Foundation
William and Denyse Jopling	Robert Teskey	P.E.O. Sisterhood Chapter H	Yvonne Cowan	Steven and Kathryn Lavery	Nigel Smart	Estate of Charles Robert Neill
David and Colleen Judge	Stephen and Marian Thompson	PT Business Services Ltd.	Heidi and Edward Czarnietzki	Norm and Betty-Ann Leaf	Murray Smart	Farrell Mechanical Sales Inc.
Janice Kent	William Thomson and Margaret Coates	Pure Class Dance Arts Association	Louise Davis	Marcel LeBlanc	Darren and Mavis Snider	Gaetz Realty Inc.
Kenneth King	John Vederas	Ross McBain Charitable Gift Fund	Wendy Dawson	Veronica Lednicki	Clinton and Geneva Sopchyshyn	Hai Nguyen Professional Corporation
Lorne and Elizabeth Kish	Linda Vickery	Rotary Club of Edmonton Glenora	Janet Dixon	Robert and Glorann Lee	Valerie Souliere	Highlands United Church Women
Ruth Elinor Klapstein	Elsbeth von der Burg	Shelley and Guy Scott Family Foundation	Joseph Doucet	Andrew Lefebvre	Brice and Lorna Stephenson	Imperial Oil
Remkes Kooistra	Roderick Wacowich	St. Albert United Church Women	Alison Dowling	Bernard Linsky	Joyce Strobl	John H. & Marie Koziak Family Foundation
Jochen Kuttler	Marilyn and Donald Walton	Starbucks	Martha Doxsey	Lois Lucas	charles swiniarski	KIKIT Convenience Stores
Donna Laderoute	Donna Watson	Strathearn United Church	Jacqueline and Martin C. Elton	Robert Luth	Maurice and Marna Taylor	Laurie Thomson Fund at the Edmonton Community Foundation
Rene Lincoln	Kathy and Scott Watson	Sun Life Financial	Candace Enns	Stephen and Lynn Mandel	Patricia Teha	McNally High School
Stephen and Catherine Madsen	Doug Weir	The Barry and Doreen Dewes Family Foundation	Kimberly Epp	Ana Manderson	Linda Thiessen	MEAT Barbecue LTD
Kevin Mah	Susan Wigeland	The Unitarian Church of Edmonton	Rochelle Epp	Brian McLennan	Kelly Torkelson	Morguard Investments Limited
Sharon McColl	Crystal and Blair Willie	University of Alberta Medical Students	Steven Ewaskiw and Miranda Koroluk	Sandra and Ian McRobbie	Donna Trenholm	Par2Pro
Ross Mccrady	Robert and Carol Wilson	Wiebe Family Fund at the Edmonton Community Foundation	Donna and Rory Farrell	Devidas Menon	Kiersten Walker	Partridge Hill United Church
Muriel McMurdo	Lois and Terry Wood	Youth Emergency Shelter of Edmonton Fund at the Edmonton Community Foundation	Michael Fiorino	Maxine Mikkelsen	Jeff Walter	Queen Elizabeth High School
Andrew Megson	John and Jill Woodman	Sara Abraham	Patricia Fleming	Randy and Jennifer Mikula	Donald and Bernice White	Richard Latte Educational Fund at the Edmonton Community Foundation
Catherine Melnychuk	Karen Zutter	Allison Akgungor	Harvey and Lillian Ford	Jennifer Minsos	Ronald and Beatrice Wicks	Richard S. Pirnak Professional
Joanna Miazga		Richard Asselin	Elsa-Marie Frazer	Jonathan Mitchell	Mark and Marla Wiens	
Samuel Mikes		Allison Baker	Don and Elaine Geake	Geneva Moore	Daniel Witte	
Bradley Miller	\$5,000-\$9,999	Darren Baptista	Diane and Glen Gibbs	David and Gail Moores	John Wodak	
Glenn Murphy	AG Grant Development	Maria Basaraba	Serge and Colleen Gilbert	David and Gail Moores	Wai lee Wong	
Paul Murray	Alberta Blue Cross	Trisha Bauman	Katherine Goble	Bryan Morlidge	Morgan Youngman	
Javaid and Henrietta Naqvi	Allaine Fund		Sandra and Mark Godel	Doreen Mueller	Catherine Ziegler	
Rob Nespliak	Angel Foundation		Gwen Gray	David and Elna Nash		
Lise Nicholson	Assiff Law Office		Doug and Susan Gregory	Kirby O'Connor	\$2,500-\$4,999	
Eileen and Stan Papulkas	ATB Financial - Edmonton Strathcona		Janet Greidanus	Barbara Osterhout	Allan & Donna Lundell Family Fund at the Edmonton Community Foundation	
Darcey and Rose Parasychnuk	Aviva Insurance Company of Canada		Rex Groeneveld	Laura and Allan Pankratz		
Fred and Rolanda Patton	Bimbo Canada		Janiline Hardstaff	Justin Pertman		
Karen Reed	Canterra Suites Hotel		Timothy Hartnagel	Jessica and Craig Pinder	AMJ Campbell	
Ted and Rita Rempel	CN Employees' and Pensioners Community Fund		Debra Hathaway	Kimberly Precht	Ann & John Dea Family Fund at the Edmonton Community Foundation	
Gerd Resch	Detheridge Family Fund at the Edmonton Community Foundation		Jonathan Hazenberg	Michel Proulx		
Daryl Rivest			Leslie Helmers	Carolyn Alma Quinn	Annunciation Catholic Women's League	
Allan Rowsell			Sandra Hill	Michele Rajotte		
Glenna Russell			Leola Hillaby	Claudia Ramsay		
Mark Salomons	Dr. T.A. Kasper		Barbara Hinz	Marc and Theresa Ratte		
			Jack and Sharron Hostland	Elizabeth Richards		

Corporation	Matthew Dean	Rita Jager	David Milne	Amanda Scott	Diana and Don Wilson	Michael and Kathryn Brechtel Fund at the Edmonton Community Foundation
RONA Foundation	Barb Deneka	Jared and Jennafer Johannesen	Raymond Mitchell	Courtney Seeger	Elliot Wood	Michael Mengel Professional Medical Corporation
Shell Canada	Brea Desaulniers	Scott Johnson	Victor Mitchell	Dorri Seemann	Dan Worley	Michael Phair School
Snow Valley Ski Club	Nathan Devries	Danica Johnston	Russell Monck	Marilyn Shannon	Jeff Wright	Mint
St. Paul Lutheran Church	John and Sunni Dixon	Penny Jones	Hugh Montemurro	Karen Shapka	Keith Wylie	Naturally Inclined Health
Tarik Foundation	Rowena Dixon	Anila Joy	Craig and Heather Montgomerie	Keara Shaw	Emma Wynters	Northwest Healthcare Properties
TD Canada Trust - Branch #8312	Karl and Caryn Domning	Jennifer Karwacki	Edward Montgomery	Marie Shysh	Giselle Yanish	Our Lady of the Angels Catholic Women's League
The Catholic Parish of Ste. Anne	Allison Dosman	Sheila Keenan	William and Constance Moores	Doug and Lynne Sigler	Antonia Yarmon	Papulkas Family Grace & Gratitude Fund at the Edmonton Community Foundation
Urban Bulldogs Against Kids Abuse	Jim Downing	Bill Kelly	Mary Morgan	Terry and Jackie Simmonds	Jean Young	Peace Love Infinity Fund
YESS 2 Love Fund at the Edmonton Community Foundation	Catherine Doyle	Thomas and Dianne Kieren	Joanne Morrison	Elaine Sinclair	JoAnn Young	R.W.K. Construction
Betty Adams	Eugenie and Claude Dube	Marion Kilgour	Lori-Ann Muenzer	Barbara and Gerry Sinn	Nathan Zelyas	Reliant Residential Services
Annette Ahner	Malcolm Scott and Jean Duncan	Robyn King	William Myskiw	Allison Smale	Bent Zimmer	Roman M. Kujath Architect Ltd.
Randy and Catherine Allarie	Thomas Ernst	Ellen and Monroe Kinloch	Ripudaman Negi	Scott Soehn	Edward Zrubak	St. Columba Anglican Church
Susan and Terry Anderson	Bryan and Olga Ferguson	Rita Kinsman	Duane Nelson	Margaret Sombrofsky	\$1,000-\$2,499	Strathearn Heights Ltd.
Miranda Anderson	Marian Kowalchuk	Marian Kowalchuk	Ron Nesbitt	Donald Spady	Academy Dental	TELSCO Security
Robert Angeli	Dave and Delphine Filipchuk	Barbara Krahn	Harold and Charmaine Neth	Brenda St Germain	Anderson Haak & Engels	The Board Of Trustees Of St. Albert School Division
Catherine Armstrong	Jane Filipow	Kathleen Krause	Alain Nogue	Herman and Mariette Stad	Around 60 Club	The Purple Shirts
Mavis Averill	Scott Findlay	Jim Kresta	David and Carey Organ	Mary Starchuk	Barbara G. Blackley Fund at the Edmonton Community Foundation	Tiger Family Fund at the Edmonton Community Foundation
Don Badger	Harry and Velma Forest	Marie and Clement Laframboise	Cathy Page	Keith Stefanick	Bee Clean Building Maintenance	Twice Cream
Keith Barry	Margaret Yvonne Forman	Michael Langstone	Della and Jason Paradis	Frank and Riek Stolk	Best Buy Canada	Unity of Edmonton
Venetia Baudin	Tom and Elaine Fowler	Karon Langton	Ruth Patrick	Iris Storie	BKY Technologies	Venturi Engineering Solutions Inc.
Ryan Berry	Douglas French	Geraldine LeBeau	Mary Pattullo	Mary Stratton	Bruyer & MacKay LLP	YESS Directors' Fund at the Edmonton Community Foundation
Robert Bhatia	Joe Frigon	William Lee	Alex Peacock	Barry and Marie Strauss	Castledowns Recreation Society	YESS Staff Contributions Fund at the Edmonton Community Foundation
Janine Bigelow	Helen Gamrat	Morris and Beverly Lemire	Margaret Petrin	John and Ann Stuart	Corrosion Service Company Limited	Stephen Aaron
Vivian Binnema	Marianne Garley	Marie-Claude Levert	Krista Piebiak Patterson	Donna and Dave Suchan	Crop Diversification Centre North Social Club	Robert Abbott
Chad Birkbeck	Mary Garnier	Carl and Kathryn Lindemann	Raymond and Lenora Pinkoski	Glen and Audrey Sustrik	E. Mirth Professional Corporation	Kenneth Abernathy
Michael and Bonnie Bock	Brenda Gendron	Margo Long	MaryAnn Platz	Richard and Johanne Tarleton	Edmonton 5 Pin Bowlers Association	Robin Adkins
Wesley Bogdanski	Susan Gillespie-Lusk	Patricia Luxford	Anna and David Porfon	Cara Taylor	Epic Games	Sharon Ainslie
Margaret Booker	Sylvia Gray	Mavis MacDonald Quirk	Doug Prime	Denise Theberge	Equitable Bank	Linda Allen
Carolyn Bougher	Michael Greaney	Judy and Stuart Mackay	Lakshmi Puttagunta	Ann and Robert Thompson	Escuela MillCreek School	Jose Amorim
Leah Boyd	April Grindheim	Ann MacKay-Drobot	Dorothy Radakovich	Douglas and Deborah Titosky	Freson Bros	Steve Andersen
Georgette Brodeur	Jeff Gusdal	Cheryl MacKenzie	Stanley Rampling	Vivianne Todd	Gap	Ed and Michelle Andrews
Hugh and Loretta Brown	Carol Haley	Jack MacMillan	Jo-Ann Rauschenberger	Irene Trites	Global Public Affairs, Inc	Christina Andreychuk
Valerie Burke	Kellen and Kellen Hall	Edwina Madill	Terry and Elisa Rawe	Scott Trueman	Greenjeans Interiorscape Ltd.	Norman Aust
Bernedette Butler	Peter Harleman	Bradley and Katharine Magor	Florence Reid	Nick and Anne Van Waes	Greta Bar YEG	
Myles Bye	Barbara Hartmann	Roland Majeau	Gerald Reid	Gail and Derk VanEerden	Intuit Canada	
Lynn Carrier	Z'Anne Harvey-Jansen and Bradley Jansen	Adele Mandryk	Diana Remmer	David and Bonnie Visser	Jane Hopkinson Fund at the Edmonton Community Foundation	
Evelyn Carson	Kathleen Henderson	Richard Maranchuk	Simon and Rita Rivest	Christophe Voegeli	Korwin Cromwell Professional Corporation	
Kenneth Charlebois	Karen Herzog	Nancy Maripain	Cindy Rizzoli	Nancy Wendt	Love out Loud Charitable Fund	
Mersa Cholach	Mark Heule	Michael Marks	Beverly Robertson	Vita Wensel	Mattamy Homes	
Glenn Cholak	Rebecca Hiebert	Richard Maschler	Greg Robins	Wade Wesolowsky	MDS Investments Ltd.	
Cecelia Clarke	Andrew Hingston	David Mayor	Willard and Bibiane Robitaille	Dianne Westwood	MEG Energy	
Herbert and Joyce Cook	Alan and Angela Hingston	Gwenneth McCracken	Evan Romanow	Nancy and Andrew Whistance-Smith		
Colleen Cust	Geoffrey and Brenda Ho	Sean McDonough	Donald Rubuliak	Rena Whistance-Smith		
Margaret and Dik Cusveller	Greg Holben	Jeremy Mercer	John Ryan	Nancy White		
Sharon Damery	Ernest Howe	Pat and Elaine Merrick	Darlene and John Scammell	Barbara and Russell White		
Bernie and Leona Davuin	Kimberley Hutton-Franchuk	Deanna Messner	Gesina Schenk	Rochelle Wilson		
Brandy Davison	Shannon Ip	Elizabeth Millar	Jens Schmarbeck			
	Gloria Iwanyszyn	Richard and Cheryl Miller	Bert and Hendrica Schouten			
	Jan Jackson					

Khalid Aziz	Franca Cattoni	Fahner	Karen and Joseph Hunder	Patricia Long	Christa Owsley	John Schile	Vanderspoel
Jocelyn Badley	Ada Chan-Cumming	Nicole Finseth	Mary Hunter	Shannon Loutitt	Solange Pahud	Lori Schmidt	Gary Vandervinne
Marianne Baird	Denise Chang-Yen	Susan Flook	Cheryl Hunter Loewen	Susan Love	Allison Palmer	Bruce Schmidt	Paul Vanhooren
James and Ilona Baker	John and Marlene Channon	Robert and Elaine Forss	Ernie Jacobson	Jaxon Lutzer	Maureen Pankiw	Clarence and Minnie Schoepp	Philip Veale
Ruth Ball	Ashley Charlton	Joe and Jocelyn Fortier	Barbara Jamieson	Linda Lyons	Carole Parker	Steve and Rita Schubert	Catherine Vereyken
Fiona Bamforth	Andre Charrois	Janice Foster-Cole	Lloyd and Kathy Jessup	Ann Lyseng	William and Ann Paterson	Allan Schumacher	Zwanette and Jan Vermegen
Melhi Bandravala	Judith Chartier	Diane Frado	Stacey Johnson	Barb MacDonald	Geordan Patterson	Esther Schwab	Jocelyn Verreault
Enzo and Catherine Barichello	Susan Chevalier	Joy Fraser	Dave Johnson	Kathryn Macintosh	Barbara Pearce	Dorothy Scott	Ian Vik
Kaylin Barnes	Janice and Martin Ciesielski	Megan Freeman	Shirley and Frank Johnson	Adele Maines	John Pearce	Carol Sharman	Rachel Vincent
Pat and Dolores Barnes	Kelly Cisar	Margaret Friederichsen	Harvey and Ann Johnston	Ronald Mann	Greg Pelsey	Byron Shikaze	Ruth Vriend
Gregg Beever	Freda Clemens	Rhoda Friedman	Connie and Bohdan Kahanyshyn	Ronald and Gloria Masse	Leslie Percy	Karin Sieg	Joyce Wachter
Donna Begin	David and Bonnie Cochrane	Rhonda Friskie	Colleen Maykut	Mary Mather	David and Elaine Petrosky	Marlise Siegenthaler	Jack and Heather Wallace
June and Blaine Beisiegel	Gerald Coen	Warren Gallin	Sara Kalke	Karena Mathers	Juergen and Helga Pfaff	Sharon Siga	Joan Walters
Daniel Belland	Joseph and Marta Collier	Elaine Geddes	Khadija Kanji	Carmen McClung	Conal Pierse	Rachel Sim	Beth Watkins
Susanna and Stephen Belter	Karen Cook	Vernon Gee	Nancy Kasawski	Courtney McConnan Borstad	Robert Pipella	Diane Sinclair	Elizabeth Watson
Adrian and Breanne Benoit	Keith Cooke	Deborah Gies	Margaret Kawulich	Ian McCrum	Diana Pocsidio	Bette Lou Smathers	Hugh Watt
Lorrie and Megan Berg	Jean Corriveau	Roberta and Robert Giffin	David and Laura Kay	Allan McDonald	Fred Prather	Chad Smith	Monika Weber
Twila Bergen	Frances Coughlan	Patricia Gillespie	Lorian Kennedy	Maureen McGuire	Sharon Prather	Marilyn Smith	Cassandra Weir
W. Berner	Michelle and Glen Craven	Stella Gillespie	Michael Kirchenbauer	Margaret McInall	Erin Prenoslo	Yvonne Smith	Cristina Wendel
Cherri Bevilacqua	Donna Crossley	Randy and Jane Girard	Brian Kjenner	John McInerney	John Prusakowski	Simon Smotkowicz	Emily Westwood
Keith Blackie	Norman and Marilyn Crux	Miranda Godber	Greg and Karen Klak	Jayne and Craig McKnight	Anne Purves	Douglas Sollows	James and Joan White
Sandra Blume	Gordon and Karen Cumming	Edward Gots	Greg and Karen Klak	Marcia McLean	Danny Quevillon	Douglas Sollows	Vonnie Whiting
Laurie Boadway	Ronald and Wendy Curry	Dana and Holly Gray	Peter and Deborah Klippenstein	Jeanette McLeay	Henry and Lorraine Radosh	Kim Sorochan Jones	James Whittle
Terrence and Kathleen Bocock	Susanne Curtis	Yvonne Gregory	Derry Knaak	Lynda McLeod	Patricia Rae	Brian and Jan Soutar	Mary and Ed Wiersema
Cheryl Boisvert	Barb and Gurston Dacks	Gertraude Gross	William and Yvonne Koehn	Kenneth McMillan	Cheryl Raiwet	Kathy Spachynski	Karl and Susan Wilberg
Grace Bokenfohr	Kenneth and Cheryl Danchuk	Richard and Teresa Grynas	Catherine Koller	Laurel McVeigh	John Raposo	David and Valerie Spink	Sharon and Patrick Willms
Brian and Lois Bonik	Jude Daniels	Margaret Haag	Lawrence Kolmatycki	Susan Menzak	Colleen Raymond	David Rayner	David and Valerie Spink
John Booth	Lynn and Raymond Davis	Gail Hache	David Korenowski	Olga Messinis	David Rayner	Karen Redford	Danica Staudt
Keith Bouwman	Cheryl Demorest	Karen Hansen	Ken Kozak	Colette Miller	Florence Reducka	Florence Reducka	Al Stempfle
Lesia Boychuk	Amelia Deneka	Hillary Harrison	Ward Krecsy	Joseph Miller	Deborah Reinhart	Deborah Reinhart	Drew Stewart
Debbie Boyko	Doug Densmore	Cole Harrison	Denise LaFitte	Janet Miller	Katrina Rempel	Katrina Rempel	Irene Stilwell
Charlotte Bragg	Wendy DeRosa	Chris and Laura Haugen	Penny Lamnek	Lynette Miller	Michael Renkas	Michael Renkas	Diane Stone
Janet Brandon	John and Irene Dmitri	Tammy Hay	Marilyn Langevin	Cailin Mills	Grant and Jennifer Rennie	Grant and Jennifer Rennie	Richard Samuel Suhardi
Richard and Karolee Brausen	Peggy Dodson	Stephanie Hayes	Robert Larsen	Umer Mirza	Ashley Rennie	Ashley Rennie	Jay Summach
Nicole Brenda	Patricia Doerksen	Lawrence and Roni Hermanutz	Linda Lee	Richard and Dorothy Mitchell	Merilie Reynolds	Merilie Reynolds	Jordan Taft
Beverly and John Brennan	Hayley Dolman	Elinor Hodges	Tina Lefebvre	Ira Moehler	Angela Richardson	Angela Richardson	Judy Talen
Mark and Deb Brostrom	Carol Donald	Irene and George Hodgson	Ronald Lehmann	Robert Morison	Heather Richholt	Heather Richholt	Megan Teha
James Brown	Louise Dorner	Tara Hogue Harris	Jim Leitch	Sonya Mowbrey	David Ridley	David Ridley	Samantha Tewitz
Jeanette Buckingham	Judy-Lynn Downey	Siena Holman	Joanne Lengyel	Jeff Munro	Laurie Roberts	Laurie Roberts	Tom and Kathy Thackeray
Sheila Buckle	Maria Dunn	Paul Hoveland	Margaret Levitt	Alex and Paulette Munro	Ethel Roberts	Ethel Roberts	Jason Thomas
Lynne and Jack Bula	Diane Dunn	Marianne Howell	Michael Lewchuk	Amber Myre	David and Margaret Rolf	David and Margaret Rolf	David and Margaret Rolf
Sarah Burton-Macleod	Robert and Theresa Dunster	Michael Hrycun	Michael Lewis	Perfect Ndlovu	Kimberley Romano	Kimberley Romano	Kimberley Romano
Adolf and Kathleen Buse	Shirley Edgar	John Hudson	Michael Link	Karlie Nelson	Marian Rossiter	Marian Rossiter	Marian Rossiter
Ingrid Butler-Sieben	Annamaria Edwards	Karen Hughes	Natalie Lippa	Maya Nishiwaki	Brian Rowe	Brian Rowe	Brian Rowe
Dee Cartledge	Angela Endres	Gregory and Rosemarie Humniski	Mary Lister	Dale Nordin	Michele Ruff	Michele Ruff	Michele Ruff
	David Evans		Sandra Locke	Deedee Norton	Fiona Salkie	Fiona Salkie	Fiona Salkie
	Lewis and Jane		Sandra Locke	Kathy Nowicki	Wenda Salomons	Wenda Salomons	Wenda Salomons
			Natasha Lockrem	Sarah Nyland	Judith Samoil	Judith Samoil	Judith Samoil
			Shannon Loehr	Karen and Lloyd Olson	Douglas and Lynda Sanderson	Douglas and Lynda Sanderson	Douglas and Lynda Sanderson
			Ross and Jane Logan	Patricia O'Neill	Philippe Sarlieve	Philippe Sarlieve	Philippe Sarlieve
					Wayne Sartore	Wayne Sartore	Wayne Sartore

YESS is generously supported by



There is a story behind every number. Contact us to find out more.

T: 780.468.7070

E: giving@yess.org

9310 82 Avenue
Edmonton AB T6C 0Z6

www.YESS.org

@YESSorg



Cover Artwork by Jonathan Busch

CRA Registered Charitable No.: 12953-7437 RR 0001



YESS
youth empowerment & support services

